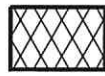


EXHIBIT "B"

SHEET 1 OF 3

EXISTING EASEMENTS

- ① 40' WIDE EASEMENT FOR PUBLIC HIGHWAY TO THE COUNTY OF SAN DIEGO PER BOOK 257, PAGES 498 & 499 OF DEEDS REC. MAR. 8, 1900
- ② 10' WIDE EASEMENT FOR PUBLIC HIGHWAY TO THE COUNTY OF SAN DIEGO PER FILE NO. 8249, PAGE 989 O.R., REC. JAN. 15, 1965
- ②A 10' WIDE EASEMENT FOR PUBLIC HIGHWAY TO THE COUNTY OF SAN DIEGO PER FILE NO. 8246, PAGE 980 O.R., REC. JAN. 15, 1965
- ⑤A 31' WIDE EASEMENT FOR PUBLIC HIGHWAY TO THE COUNTY OF SAN DIEGO PER DOC. 2005-0819333, O.R., REC. SEPT. 22, 2005
- ⑤B 19' WIDE EASEMENT FOR PUBLIC HIGHWAY TO THE COUNTY OF SAN DIEGO PER DOC. 2005-0819333, O.R., REC. SEPT. 22, 2005
- ⑦ IRREVOCABLE OFFER OF DEDICATION FOR PUBLIC HIGHWAY, TO THE COUNTY OF SAN DIEGO PER DOC. 2005-0819334, O.R., REC. SEPT. 22, 2005
- ⑨ ABUTTER'S ACCESS RIGHTS RELINQUISHED TO THE COUNTY OF SAN DIEGO EXCEPTING THREE 30' WIDE ACCESS OPENINGS PER DOC. 2005-0819335, O.R., REC. SEPT. 22, 2005
- ⑩ ABUTTER'S ACCESS RIGHTS RELINQUISHED TO THE COUNTY OF SAN DIEGO PER DOC. 2006-0420589, O.R., REC. JUN. 14, 2006
- ⑭B 19' WIDE EASEMENT FOR PUBLIC HIGHWAY TO THE COUNTY OF SAN DIEGO PER DOC. 2011-0251783, O.R., REC. MAY 16, 2011

SE 1/4 OF SW 1/4
SEC 30T 18 S
R 1 E**LEGEND**INDICATES RIGHT OF WAY
FOR OTAY MESA ROAD
VACATEDINDICATES ACCESS RIGHTS
RELINQUISHED PER ⑩INDICATES ACCESS RIGHTS
RELINQUISHED PER ⑨WEST LINE OF SE 1/4
OF SW 1/4 OF SEC 30

0 100 200 400

SCALE: 1"=200'

JOSEPH G. CRESTO
PLS NO. 8050

DATE

4/6/22

ALTA ROADNW 1/4 OF SEC 31
T 18 S
R 1 E**OTAY MESA ROAD****STEVENS-CRESTO ENGINEERING, INC.**
CIVIL ENGINEERS - PLANNERS - LAND SURVEYORS9665 CHESAPEAKE DRIVE
SUITE 200
SAN DIEGO, CA 92123-1352PHONE: 858.694.5660
FAX: 858.694.5661
www.scengr.com

RIGHT-OF-WAY VACATION
OTAY MESA ROAD
 SE 1/4 OF SW 1/4 OF SECTION 30
 TOWNSHIP 18 SOUTH, RANGE 1 EAST, S.B.M.
 A.P.N. 648-040-13

SCE NO. 18010.03

DATE: 2022 04 06

SCALE: 1" = 200'

DWG: 18010 ROW VACATION 01

DRAWN BY: AAH

CHECKED BY: JGC

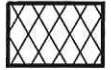
EXHIBIT "B"

SHEET 2 OF 3

P.O.C.
PARCEL "A"
 SE CORNER OF
 SE 1/4 OF SW
 1/4 OF SEC. 30

ALTA ROAD

LEGEND



INDICATES RIGHT OF WAY FOR
 OTAY MESA ROAD VACATED
 PARCEL "A" CONTAINS 3,645
 SQ.FT. OR 0.084 ACRES, MORE
 OR LESS.



INDICATES ACCESS RIGHTS
 RELINQUISHED PER 10



INDICATES ACCESS RIGHTS
 RELINQUISHED PER 9



INDICATES TIE LINE ONLY

NOTE

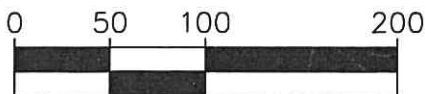
SEE SHEET 1 FOR EASEMENT LEGEND

SE 1/4 OF SW 1/4
 SEC 30

T 18 S
 R 1 E

LINE DATA TABLE

NO.	BEARING	LENGTH
L1	N00°49'38"E	61.00'
L2	S00°49'38"W	5.49'
L3	N89°10'22"W	137.41'
L4	N44°10'22"W	16.97'
L5	N89°10'22"W	96.00'



SCALE: 1"=100'

T.P.O.B.
PARCEL "A"
POINT "A"

HIGHWAY EASEMENT PER
 DOC. 2022-0062802, O.R.
 REC. FEB. 10, 2022

120' WIDE OPENING PER
 DOC. 2022-0010502, O.R.
 REC. JAN. 07, 2022

PARCEL "B"
 SEE SHEET 3

NW 1/4 OF SEC 31
 T 18 S
 R 1 E

OTAY MESA ROAD



STEVENS-CRESTO ENGINEERING, INC.
 CIVIL ENGINEERS • PLANNERS • LAND SURVEYORS

9665 CHESAPEAKE DRIVE
 SUITE 200
 SAN DIEGO, CA 92123-1352

PHONE: 858.694.5660
 FAX: 858.694.5661
 www.scengr.com

RIGHT-OF-WAY VACATION
OTAY MESA ROAD
 SE 1/4 OF SW 1/4 OF SECTION 30
 TOWNSHIP 18 SOUTH, RANGE 1 EAST, S.B.M.
 A.P.N. 648-040-13

SCE NO. 18010.03

DATE: 2022 04 06

SCALE: 1" = 100'

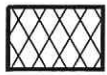
DWG: 18010 ROW VACATION 02

DRAWN BY: AAH

CHECKED BY: JGC

EXHIBIT "B"

SHEET 3 OF 3

LEGEND

INDICATES RIGHT OF WAY FOR
OTAY MESA ROAD VACATED
PARCEL "B" CONTAINS 6,918
SQ.FT. OR 0.159 ACRES, MORE
OR LESS.



INDICATES ACCESS RIGHTS
RELINQUISHED PER (9)



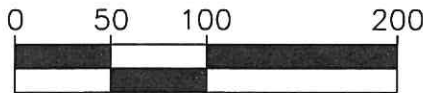
INDICATES TIE LINE ONLY

LINE DATA TABLE

NO.	BEARING	LENGTH
L5	N89°10'22"E	96.00'
L6	S45°49'38"W	16.97'
L7	N00°41'51"E	12.00'

NOTE

SEE SHEET 1 FOR EASEMENT LEGEND



SCALE: 1"=100'

SE 1/4 OF SW 1/4
SEC 30
T 18 S
R 1 E

PARCEL "A"
SEE SHEET 2

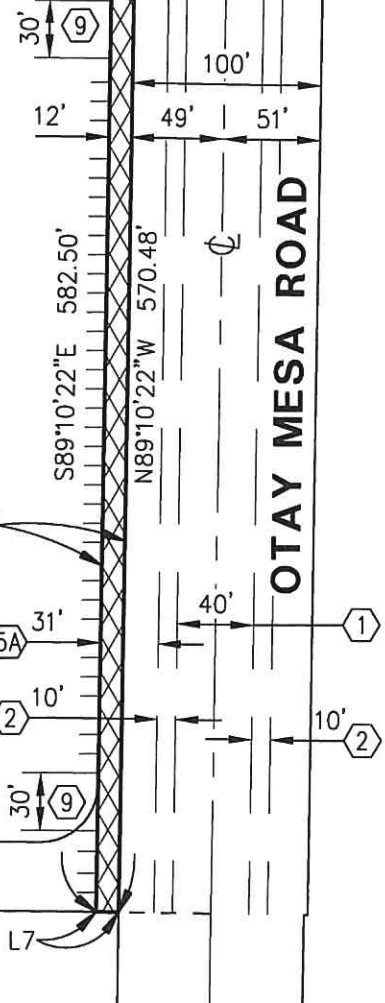
POINT "A"

HIGHWAY EASEMENT PER
DOC. 2022-0062802, O.R.
REC. FEB. 10, 2022

120' WIDE OPENING PER
DOC. 2022-0010502, O.R.
REC. JAN. 07, 2022

T.P.O.B.
PARCEL "B"

PARCEL "B"



STEVENS-CRESTO ENGINEERING, INC.
CIVIL ENGINEERS - PLANNERS - LAND SURVEYORS

9665 CHESAPEAKE DRIVE
SUITE 200
SAN DIEGO, CA 92123-1352

PHONE: 858.694.5660
FAX: 858.694.5661
www.scengr.com

RIGHT-OF-WAY VACATION
OTAY MESA ROAD
SE 1/4 OF SW 1/4 OF SECTION 30
TOWNSHIP 18 SOUTH, RANGE 1 EAST, S.B.M.
A.P.N. 648-040-13

SCE NO. 18010.03

DATE: 2022 04 06

SCALE: 1" = 100'

DWG: 18010 ROW VACATION 03

DRAWN BY: AAH

CHECKED BY: JGC

SHEET 1 OF 1

98

7 VACATED

① 40' WIDE EASEMENT FOR
PUBLIC HIGHWAY TO THE
COUNTY OF SAN DIEGO PER
BOOK 257, PAGES 498 &
499 OF DEEDS
REC. MAR. 8, 1900

② EXISTING 10' WIDE EASEMENT
FOR PUBLIC HIGHWAY TO THE
COUNTY OF SAN DIEGO PER
DOC. NO. 8249 PAGE 989 O.R.,
REC. JAN 15, 1965

②A 10' WIDE EASEMENT FOR
PUBLIC HIGHWAY TO THE
COUNTY OF SAN DIEGO PER
FILE NO. 8246, PAGE 980 O.R.,
REC. JAN. 15, 1965

⑤A EXISTING 31' WIDE EASEMENT
FOR PUBLIC HIGHWAY TO THE
COUNTY OF SAN DIEGO PER
DOC. NO. 2005-0819333 O.R.,
REC. SEP. 22, 2005
TO REMAIN

7 IRREVOCABLE OFFER OF DEDICATION FOR PUBLIC HIGHWAY TO THE COUNTY OF SAN DIEGO PER DOC. 2005-0819334, O.R., REC. SEPT. 22, 2005

14A 49' WIDE EASEMENT FOR PUBLIC HIGHWAY TO THE COUNTY OF SAN DIEGO PER DOC. 2011-0251783, O.R., REC. MAY 16, 2011 TO REMAIN

14B 19' WIDE EASEMENT FOR PUBLIC HIGHWAY TO THE COUNTY OF SAN DIEGO PER DOC. 2011-0251783, O.R., REC. MAY 16, 2011 TO REMAIN

INDICATES IRREVOCABLE OFFER
OF DEDICATION VACATED
CONTAINS 149,481 SQ. FT.
OR 3.43 ACRES MORE OR LESS

SE 1/4 OF SW 1/4
SEC 30
T 18 S
R 1 E

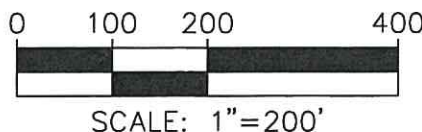
31' — 5A
TO REMAIN

OTAY MESA ROAD



JOSEPH G. CRESTO
PLS NO. 8050

4/6/22
DATE



I.O.D. VACATION

SE 1/4 OF SW 1/4 OF SECTION 30
TOWNSHIP 18 SOUTH, RANGE 1 EAST, S.B.M.
 A.P.N. 648-040-13



STEVENS • CRESTO ENGINEERING, INC.
CIVIL ENGINEERS • PLANNERS • LAND SURVEYORS

9665 CHESAPEAKE DRIVE
SUITE 200
SAN DIEGO, CA 92123-1352

PHONE: 858.694.5660
FAX: 858.694.5661
www.scengr.com