

**CLERK OF THE BOARD OF SUPERVISORS
EXHIBIT/DOCUMENT LOG**

MEETING DATE & AGENDA NO. 12/09/2025 #25

STAFF DOCUMENTS (Numerical)

No.	Presented by:	Description:
1	Staff	13 Page-PowerPoint

2

3

4

5

PUBLIC DOCUMENTS (Alphabetical)

No.	Presented by:	Description:
A	N/A	

B

C

D

E

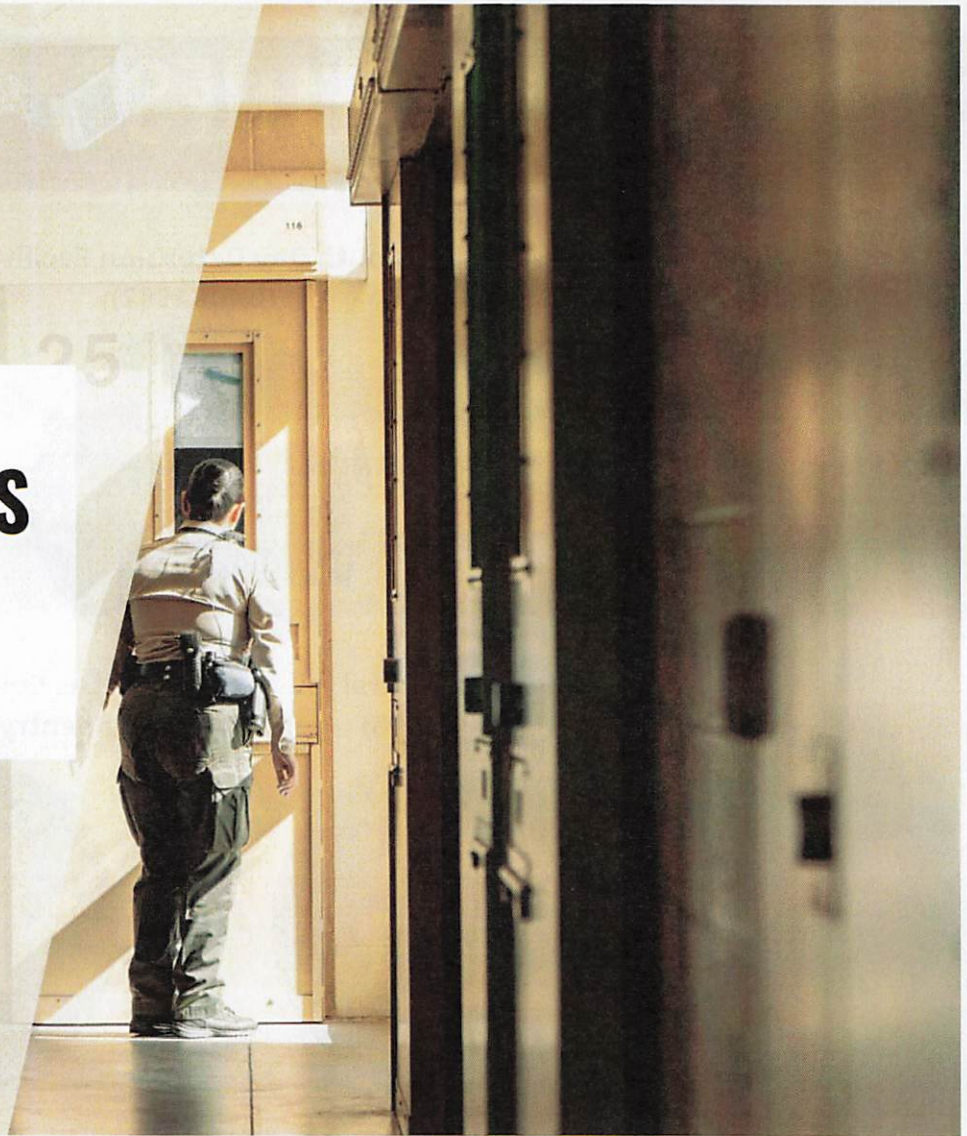
F



SAN DIEGO COUNTY
SHERIFF'S OFFICE

STATE OF COUNTY DETENTION FACILITIES INFRASTRUCTURE NEEDS

AGENDA ITEM #25 | DECEMBER 9, 2025



OUR FACILITIES

Vista Detention Facility
(Built 1978, 1980, 1989)



South Bay Detention Facility
(Built 1982)



East Mesa Reentry Facility
(Built 1991)



George Bailey Detention Facility
(Built 1993)



San Diego Central Jail
(Built 1998)



Las Colinas Detention and Reentry Facility (Built 2014)



Rock Mountain Detention Facility
(Partially Renovated 2023/2025)



INFRASTRUCTURE PRESSURES

Aging and Outdated Facilities

State Mandates and Compliance Pressures

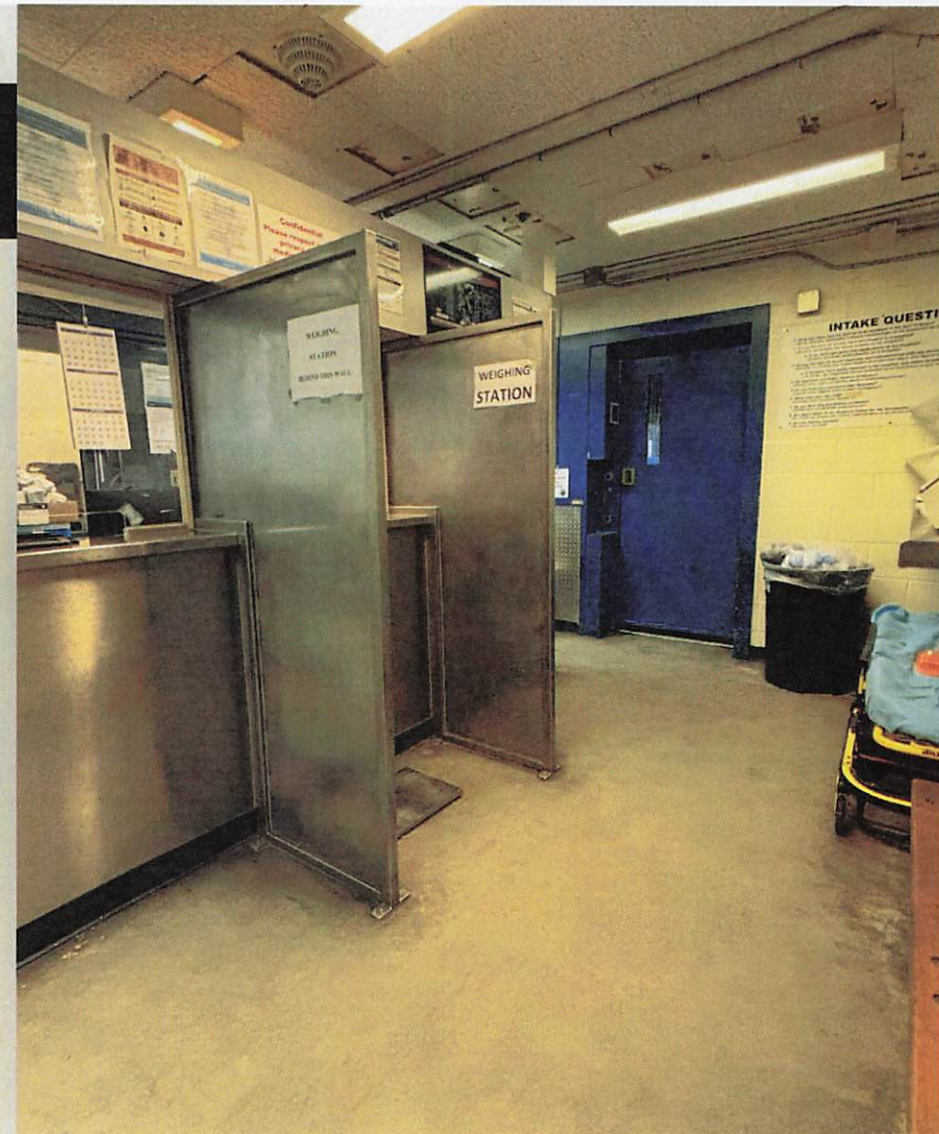
Behavioral Health and Medical Care Limitations

Technology Infrastructure is Obsolete

Rising Population Complexity

Cost Pressures

Impact on Custody Culture and Rehabilitation



DETENTION FACILITY STRATEGIC PLAN

“All seven (jail) facilities have ongoing Major Maintenance needs due to their occupancy and continuous use.”

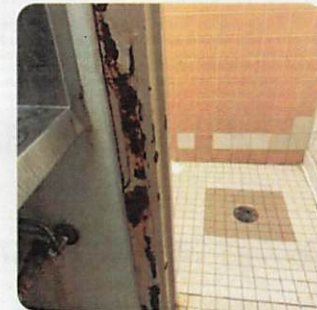
- DGS, Detention Facility Strategic Framework Plan (2023)


STRATEGIC

EXECUTIVE



SAN DIEGO COUNTY SHERIFF'S DEPARTMENT





**Since FY 21-22, SDSO identified
\$289 million in needed Major Maintenance
over the next five years**

Many jails at over 30
years which is
end-of-life



At 30 years all the
major systems within a
facility reach end of
life including HVAC,
electrical, and
plumbing



Facility maintenance
staffing doesn't
account for the
24/7/365 living and
operational
environment of jails





CINA VS MMIP

Capital Improvement Needs Assessment (CINA) Program

- **Purpose:** new construction and long-term infrastructure planning
- **Scope:** Includes projects like:
 - New County buildings (e.g., libraries, sheriff stations, health centers)
 - Major facility expansions
 - Land acquisition
 - Demolition and reconstruction
- **Timeframe:** Structured as a 5-year forecast of capital needs

Major Maintenance Implementation Plan (MMIP)

- **Purpose:** preserving, repairing, or replacing existing facilities and systems
- **Scope:** Includes:
 - HVAC, electrical, and plumbing repairs
 - Roof replacements
 - Structural repairs
 - Renovations that do not significantly change the facility's function
- **Timeframe:** Projects usually last 6 months to 2 years

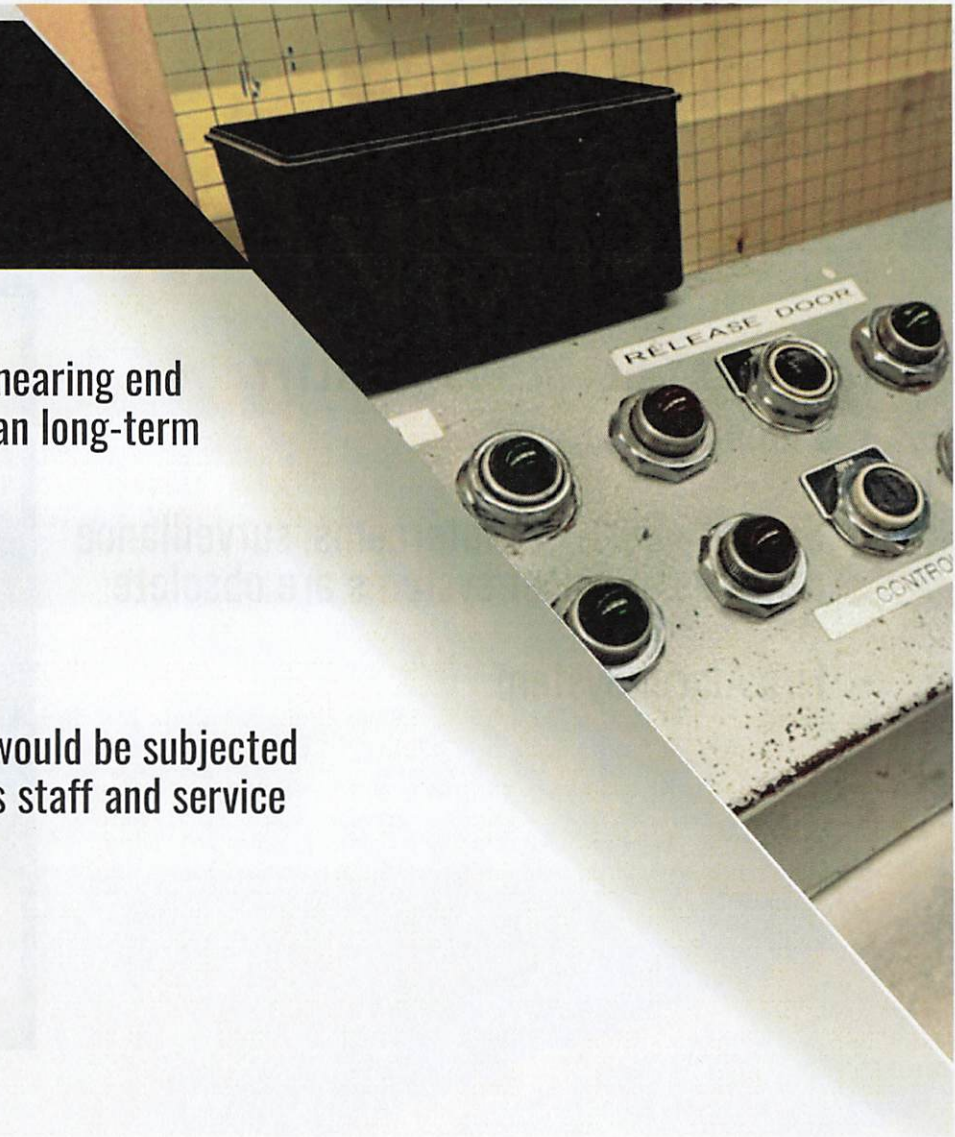
Key Maintenance Needs Across Facilities

Deferred Construction = Unsustainable Investment

- Delays in construction force spending on infrastructure nearing end of life — diverting funds into short-term fixes rather than long-term solutions

VISTA DETENTION FACILITY

- Proposed 9-year build amounting to \$720M - \$1B
 - Need to be mindful of vulnerable population living who would be subjected to years of construction noise and impacts; this includes staff and service providers
- Security System Replacement



Key Maintenance Needs Across Facilities

SOUTH BAY DETENTION FACILITY

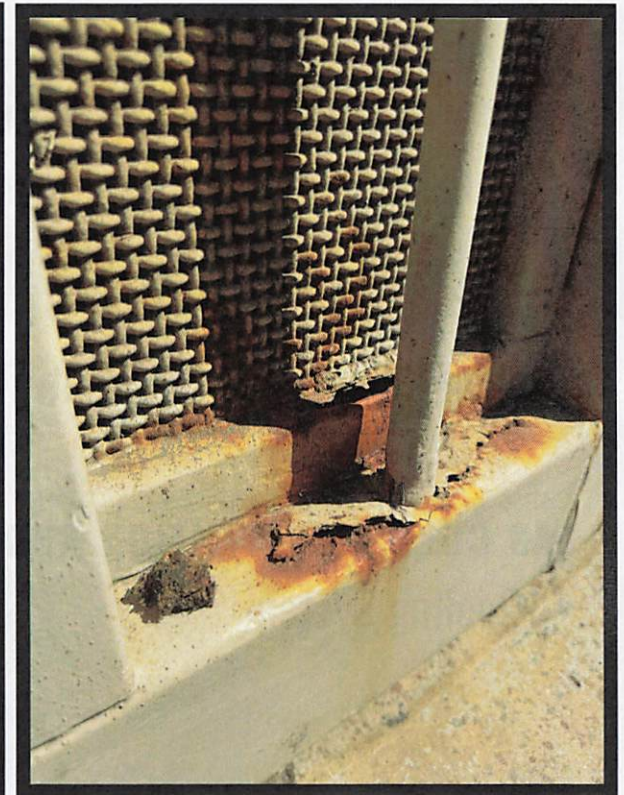
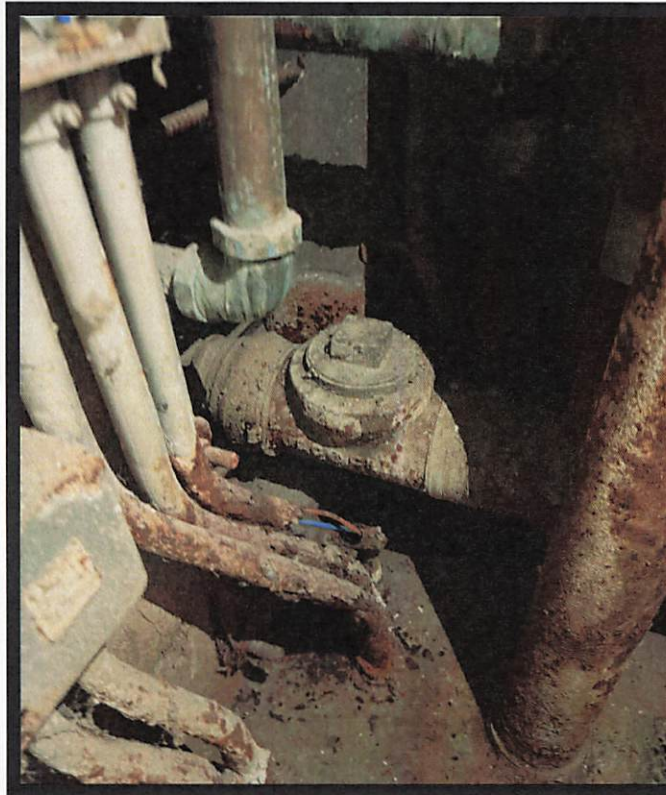
- Plumbing Systems
- Security System - intercoms, surveillance cameras and door systems are obsolete
- Fire Alarm System



Key Maintenance Needs Across Facilities

SAN DIEGO CENTRAL JAIL

- Replace obsolete infrastructure that is no longer supported
- Water Control System
- Electrical Conduits Exposed
- Air Conditioning Motor Risks
- Workspaces Deteriorating
- Gate Replacements
- Generators



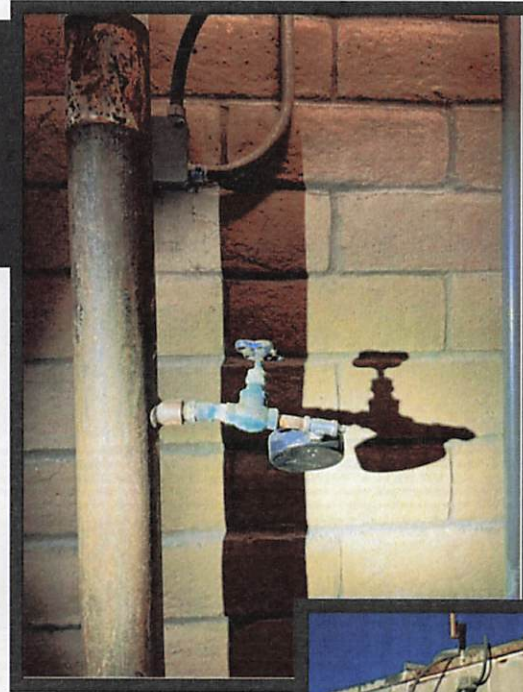
Key Maintenance Needs Across Facilities

EAST MESA REENTRY FACILITY:

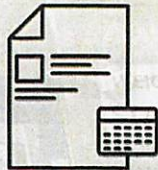
- Camera System Replacement
- Fire Sprinkler Repairs
- Roof Replacement at Central Processing Center

LAS COLINAS DETENTION AND RE-ENTRY FACILITY

- Cooling System



COMMON THEMES



Outdated Strategic Plan

Strategic Plan is Outdated and not reflective of rapidly evolving maintenance needs



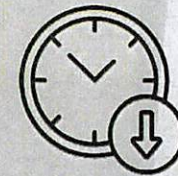
Maintenance Staffing

Staffing formula for maintenance service doesn't account for daily use and operational demand of each facility



Budget Constraints

Limited resources to meet major maintenance and capital needs



Deferred Maintenance

Critical needs often unmet resulting in higher costs and operational impact

A photograph of a COHU security camera mounted on a wall. The camera is silver and black, with the brand name 'COHU' visible on its side. Below the camera, there is a sign that reads 'ELEVATOR DOWN TO 1-B' and the number '2'.

KEY TAKEAWAYS FOR CONSIDERATION

- Explore all funding options for Vista Detention Facility including private investment
- Complete Vista Detention Facility Master Plan
- Build a facility that will meet the needs of the County for decades to come
- Add maintenance staff to address immediate need
- Initiate a study for each jail to estimate future major maintenance needs and evaluate facility maintenance staffing



**SAN DIEGO COUNTY
SHERIFF'S OFFICE**

STATE OF COUNTY DETENTION FACILITIES INFRASTRUCTURE NEEDS

AGENDA ITEM #25 | DECEMBER 9, 2025

