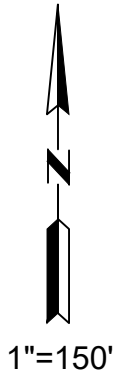


EXHIBIT "B"



LOT 60

60' ROAD EASEMENT
BK 310, PG 419 O.R.
BK 329, PG 329 O.R.

LOT 58

MAP NO.
12924
POR.
LOT 59

PARCEL NO.
2022-0151-B
(SEE SHT 3)

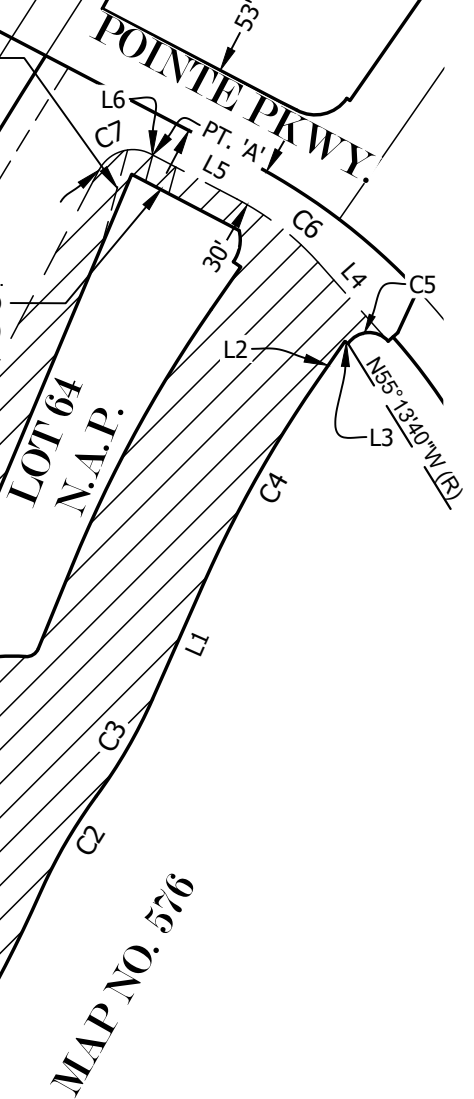
PARCEL NO.
2022-0151-C
(SEE SHT 4)

PARCEL NO.
2022-0151-D
(SEE SHT 5)


PARCEL NO.
2022-0151-E
(SEE SHT 6)

EASEMENT FOR SEWER
AND WATER LINES AND
INCIDENTAL PURPOSES
EASEMENT AS GRANTED
TO OTAY WATER
DISTRICT ON 8-27-1981 AS
FILE NO. 81-274337 O.R.

P.O.B
SE COR LOT 59



LEGEND:

- () INDICATES RECORD OR CALCULATED DATA PER MAP NO. 12924
- P.O.B. INDICATES POINT OF BEGINNING
- N.A.P. INDICATES NOT A PART
-  INDICATES PUBLIC ROAD VACATION
PARCEL NO. 2022-0151-A
CONTAINS: 311,409.44 SQ. FT.
7.149 ACRES

NOTE:
SEE SHEET 2 FOR LINE
AND CURVE DATA TABLE



JAMES R. NICOLAU IV P.L.S. 9238

4-29-2025

DATE

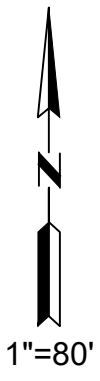
PARADIGM GEOSPATIAL INC.	PROJECT NO: PG-24-017	PARCEL NO. 2022-0151-A	SCALE: 1"=150'
	DRAWN BY: BMB	-	DATE: 4/29/25
	CHECKED BY: COB	PUBLIC ROAD VACATION	SHT NO.: 1 OF 6

EXHIBIT "B"

CURVE TABLE			
CURVE NO.	DELTA	RADIUS	LENGTH
C1	9°34'16"	1039.00'	173.56'
(C1)	(9°34'16")	(1039.00')	(173.56')
C2	12°27'45"	403.19'	87.70'
(C2)	(12°27'45")	(403.19')	(87.70')
C3	12°27'45"	403.19'	87.70'
(C3)	(12°27'45")	(403.19')	(87.70')
C4	10°54'33"	942.00'	179.36'
(C4)	(10°54'33")	(942.00')	(179.36')
C5	103°37'13"	20.00'	36.17'
(C5)	(103°37'13")	(20.00')	(36.17')
C6	20°46'56"	225.00'	81.61'
C7	90°00'00"	30.00'	47.12'
C8	37°55'53"	38.00'	25.16'
C9	133°11'55"	82.00'	190.63'
C10	87°12'30"	30.00'	45.66'
C11	3°52'58"	2,055.00'	139.26'

LINE TABLE		
LINE	BEARING	DISTANCE
L1	N23°51'47"E	99.92'
(L1)	(N23°51'47"E)	(99.92')
L2	N34°46'20"E	38.95'
(L2)	(N34°46'20"E)	(38.95')
L3	N55°13'39"W	3.00'
(L3)	(N55°13'39"W)	(3.00')
L4	N41°36'27"W	81.81'
L5	N62°23'23"W	74.09'
L6	N62°23'23"W	1.78'

PARADIGM GEOSPATIAL INC.	PROJECT NO: PG-24-017	RP#2021-0151-A	SCALE:
	DRAWN BY: BMB	-	DATE: 4/29/25
	CHECKED BY: COB	PUBLIC ROAD VACATION	SHT NO.: 2 OF 6



LOT 58

EXHIBIT "B"

60' ROAD EASEMENT
BK 310, PG 419 O.R.
BK 329, PG 329 O.R.

PARCEL NO. 2022-0151-A
(SEE SHT 1)

PARCEL NO. 2022-0151-E
(SEE SHT 6)

EASEMENT FOR WATER
AND SEWER LINES AND
INCIDENTAL PURPOSES
GRANTED TO OTAY
WATER DISTRICT ON
8-27-1981 AS FILE NO.
81-274337


JAMACHA BLVD.

LOT 65

**MAP NO. 12924
LOT 59**

MAP NO. 576

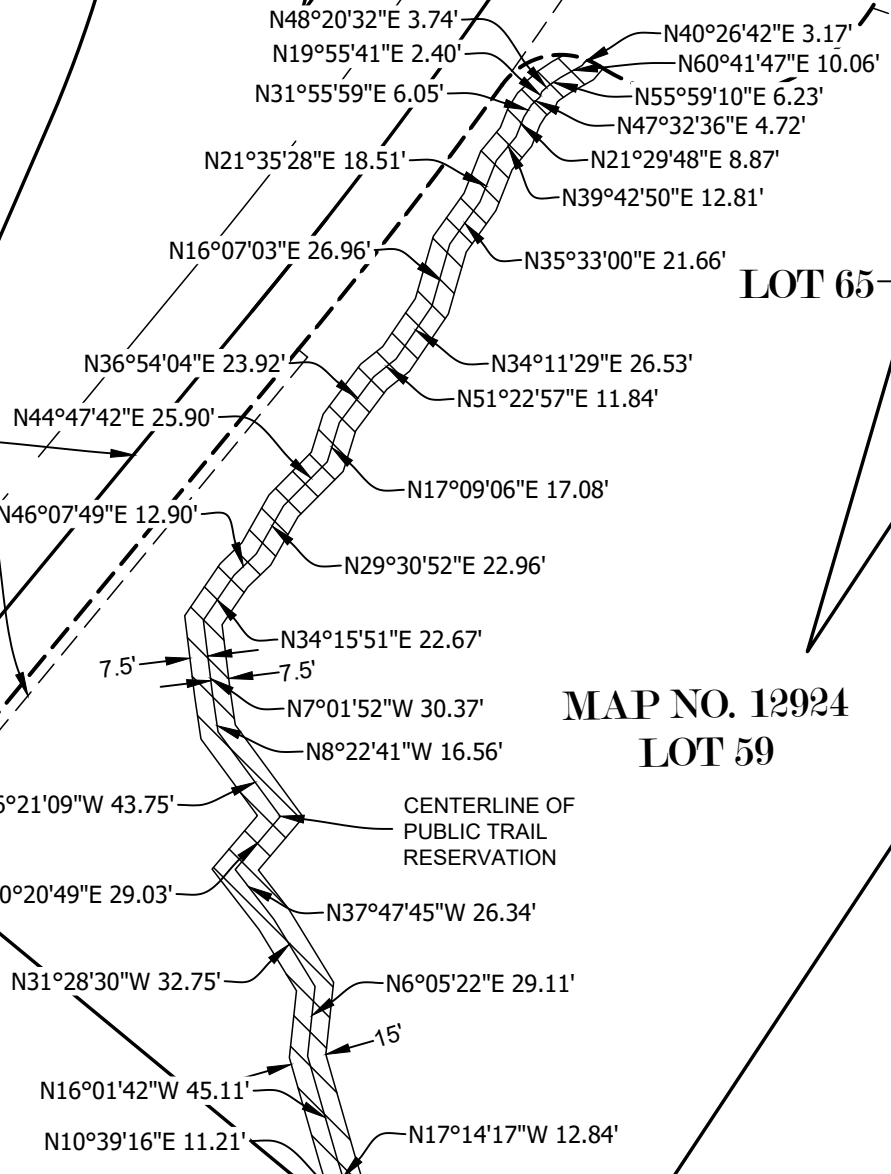
LEGEND

- P.O.C. INDICATES POINT OF COMMENCEMENT
- T.P.O.B. INDICATES TRUE POINT OF BEGINNING
- () INDICATES RECORD DATA PER MAP NO. 12924
-  INDICATES PUBLIC TRAIL EASEMENT RESERVATION
PARCEL NO. 2022-0151-B
CONTAINS: 8484.64 SQ. FT.
0.195 ACRES

T.P.O.B.

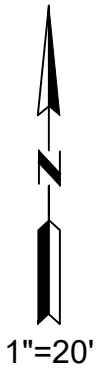
N50°28'53"W 107.00'
(N50°28'53"W)
BASIS OF BEARINGS

P.O.C
SE COR LOT 59



PARADIGM GEOSPATIAL INC.	PROJECT NO: PG-24-017	PARCEL NO. 2022-0151-B	SCALE: 1"=80'
	DRAWN BY: BMB		DATE: 4/29/25
	CHECKED BY: COB	PUBLIC TRAIL EASEMENT RESERVATION	SHT NO.: 3 OF 6

EXHIBIT "B"



LOT 61

LOT 63

POINTE PKWY.

$\Delta=35^{\circ}35'33''$ R=30.00' L=18.64'

MAP NO. 12924
LOT 59

PT. 'A'
P.O.B.

PARCEL NO. 2022-0151-D
(SEE SHT 5)

NW COR LOT 64

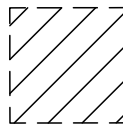
PUBLIC ROAD VACATION
PARCEL NO. 2022-0151-A
(SEE SHT 1)

LOT 64

LEGEND

P.O.B. INDICATES POINT OF BEGINNING

() INDICATES RECORD DATA PER MAP NO. 12924



INDICATES DRAINAGE EASEMENT RESERVATION
PARCEL NO. 2022-0151-C
CONTAINS: 649.82 SQ. FT.
0.015 ACRES

PUBLIC ROAD VACATION
PARCEL NO. 2022-0151-A
(SEE SHT 1)

S15°11'07"W 78.55'
N22°45'23"E 61.54'
(N22°45'23"E)
BASIS OF BEARINGS

N62°23'23"W 1.78'

N15°11'07"E 21.50'

S62°23'23"E 12.18'
(N62°23'23"W)

N7°58'56"W (R)

53'

30'

PARADIGM GEOSPATIAL INC.	PROJECT NO: PG-24-017	PARCEL NO. 2022-0151-C	SCALE: 1"=20'
	DRAWN BY: BMB		DATE: 4/29/25
	CHECKED BY: COB	DRAINAGE EASEMENT RESERVATION	SHT NO.: 4 OF 6

EXHIBIT "B"

LOT 61

LOT 63

LINE TABLE		
LINE	BEARING	DISTANCE
L1	S62°23'23"E	20.48'
L2	N15°11'07"E	21.50'
L3	N62°23'23"W	20.48'
L4	S15°11'07"W	21.50'

POINTE PKWY.

MAP NO. 12924

LOT 59

DRAINAGE EASEMENT
RESERVATION
PARCEL NO.
2022-0151-C
(SEE SHT 4)

NW COR LOT 64

S62°23'23"E 12.18'
(N62°23'23"W)
BASIS OF BEARINGS

P.O.B.

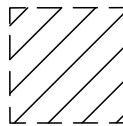
PUBLIC ROAD VACATION
PARCEL NO. 2022-0151-A
(SEE SHT 1)

LOT 64

LEGEND

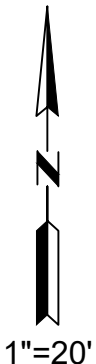
P.O.B. INDICATES POINT OF BEGINNING

() INDICATES RECORD DATA PER MAP NO. 12924



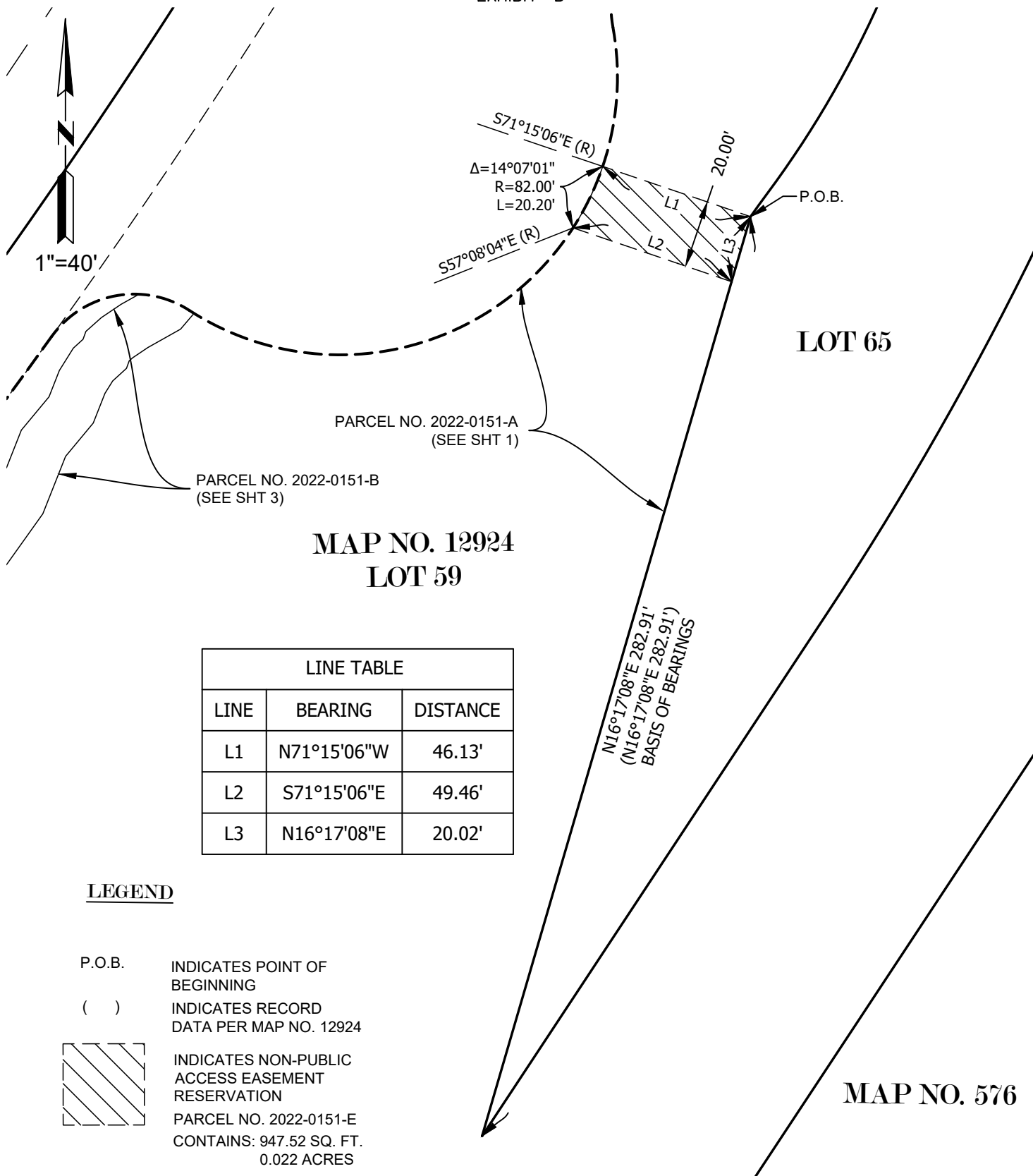
NON-PUBLIC ACCESS EASEMENT RESERVATION
PARCEL NO. 2022-0151-D
CONTAINS: 430.01 SQ. FT.
0.010 ACRES

PUBLIC ROAD VACATION
PARCEL NO. 2022-0151-A
(SEE SHT 1)



PARADIGM GEOSPATIAL INC.	PROJECT NO: PG-24-017	PARCEL NO. 2022-0151-D	SCALE: 1"=20'
	DRAWN BY: BMB		DATE: 4/29/25
	CHECKED BY: COB	NON-PUBLIC ACCESS EASEMENT RESERVATION	SHT NO.: 5 OF 6

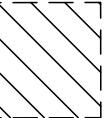
EXHIBIT "B"



MAP NO. 12924
LOT 59

LINE TABLE		
LINE	BEARING	DISTANCE
L1	N71°15'06"W	46.13'
L2	S71°15'06"E	49.46'
L3	N16°17'08"E	20.02'

LEGEND

- P.O.B. INDICATES POINT OF BEGINNING
- () INDICATES RECORD DATA PER MAP NO. 12924
-  INDICATES NON-PUBLIC ACCESS EASEMENT RESERVATION
- PARCEL NO. 2022-0151-E CONTAINS: 947.52 SQ. FT. 0.022 ACRES

PARADIGM GEOSPATIAL INC.	PROJECT NO: PG-24-017	PARCEL NO. 2022-0151-E	SCALE: 1"=40'
	DRAWN BY: BMB		DATE: 4/29/25
	CHECKED BY: COB	NON-PUBLIC ACCESS EASEMENT RESERVATION	SHT NO.: 6 OF 6