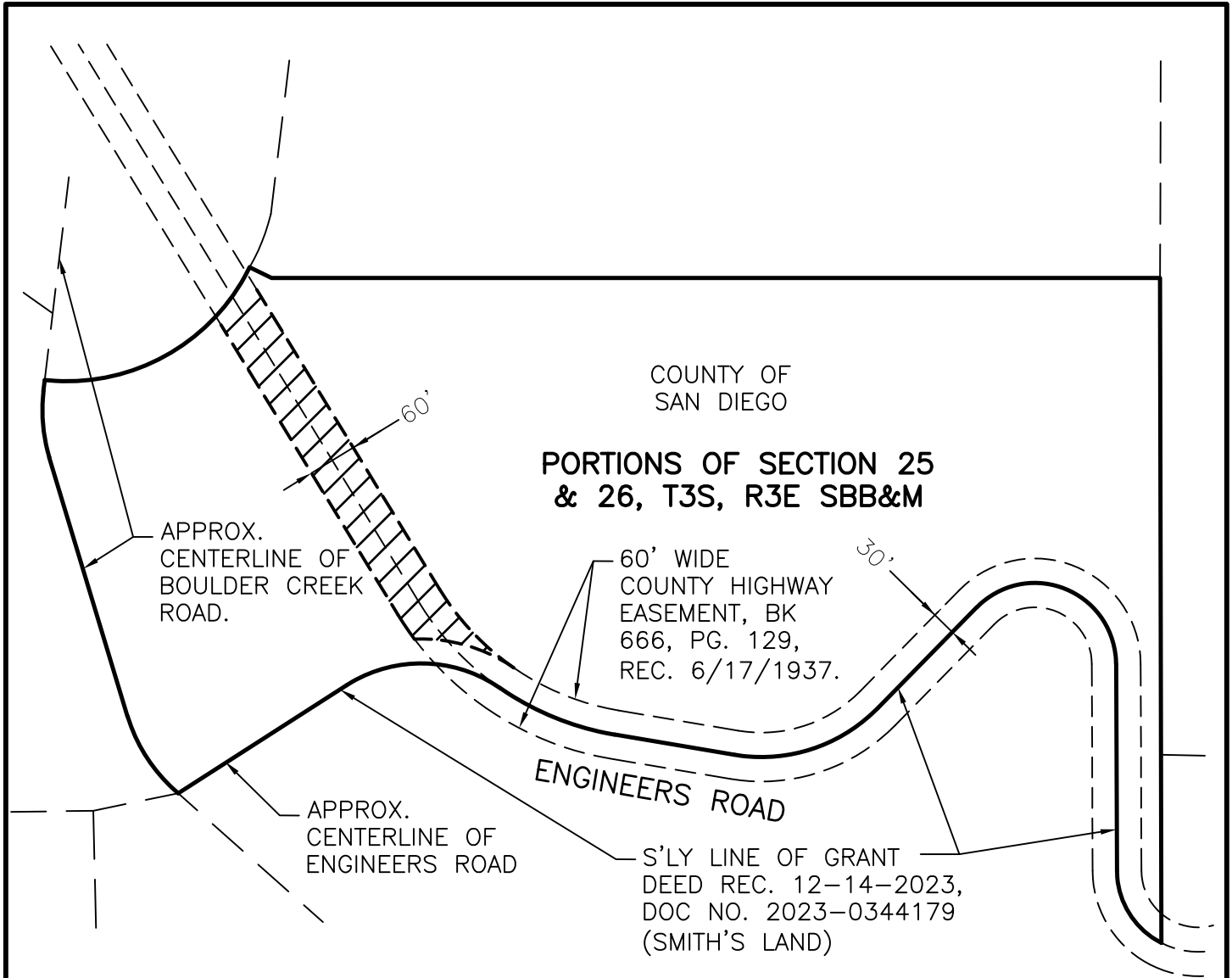


# EXHIBIT "B"



COUNTY OF  
SAN DIEGO

## PORTIONS OF SECTION 25 & 26, T3S, R3E SBB&M

APPROX.  
CENTERLINE OF  
BOULDER CREEK  
ROAD.

60' WIDE  
COUNTY HIGHWAY  
EASEMENT, BK  
666, PG. 129,  
REC. 6/17/1937.

ENGINEERS ROAD

APPROX.  
CENTERLINE OF  
ENGINEERS ROAD

S'LY LINE OF GRANT  
DEED REC. 12-14-2023,  
DOC NO. 2023-0344179  
(SMITH'S LAND)

### LEGEND



INDICATES PORTION OF ENGINEERS ROAD TO  
BE VACATED 0.696 ACRES ± (30,305 S.F.)



DEPARTMENT OF GENERAL SERVICES  
REAL ESTATE SERVICES  
COUNTY OF SAN DIEGO

APPROVED BY: TM  
DRAWN BY: TM

DATE: 4/15/24  
SCALE: 1" = 200'

1 SHEET No. 1  
OF  
PARCEL No.

PLAT TO ACCOMPANY LEGAL DESCRIPTION

2022-0160-A