



# County of San Diego

## CFD 2019-03 (Park Circle Maintenance)

Fiscal Year 2026/27  
Annual District Administration Report  
April 24, 2026

27368 Via Industria  
Suite 200  
Temecula, CA 92590  
T 951.587.3500 | 800.755.6864  
F 951.587.3510 | 888.326.6864

Property Tax Information Line  
T. 866.807.6864

[www.willdan.com](http://www.willdan.com)



# ANNUAL DISTRICT ADMINISTRATION REPORT FISCAL YEAR 2026/27

## COUNTY OF SAN DIEGO CFD 2019-03 (PARK CIRCLE MAINTENANCE)



**Prepared for**

**Special District Administration**  
COUNTY OF SAN DIEGO  
5510 Overland Avenue Suite 270  
San Diego, CA 92123

**Prepared by**

**WILLDAN FINANCIAL SERVICES**  
27368 Via Industria, Suite 200  
Temecula, CA 92590  
T. (951) 587-3500 (800) 755-6864  
F. (951) 587-3510 (888) 326-6864

*Property Tax Information Line*  
T. 866.807.6864

This report provides a summary of the financial and administrative information for CFD 2019-03 (Park Circle Maintenance) (“District”) of the County of San Diego (“County”) and is organized in the following sections:

## ***INTRODUCTION***

---

- A. FORMATION
- B. BOUNDARIES AND DEVELOPMENT SUMMARY
- C. BONDS
- D. FINANCED FACILITIES

## ***I. LEVY SUMMARY OVERVIEW***

---

- A. FISCAL YEAR 2026/27 LEVY AMOUNTS
- B. FISCAL YEAR 2026/27 HANDBILL AMOUNTS

## ***II. DELINQUENCY AND FORECLOSURE STATUS***

---

- A. DELINQUENCY SUMMARY

## ***III. SPECIAL TAX LEVY AND METHOD OF APPORTIONMENT***

---

- A. METHOD OF APPORTIONMENT
- A. SPECIAL TAX SPREAD
- B. MAXIMUM AND APPLIED SPECIAL TAX RATES
- C. APPLIED SPECIAL TAX PROGRESSION

## ***EXHIBITS***

---

- EXHIBIT A: FISCAL YEAR 2026/27 CHARGE DETAIL REPORT
- EXHIBIT B: BOUNDARY DIAGRAM
- EXHIBIT C: DELINQUENCY MANAGEMENT

## **INTRODUCTION**

---

The information provided in this report is derived primarily from documents developed at the time the District was formed and from data provided by the County or accessed through the County. The information sources include the Rate and Method of Apportionment (RMA), annual budget, debt service schedule(s), and special tax delinquency data. The development status and historical information were accessed through the County and/or the developer and are maintained by Willdan Financial Services.

The Mello-Roos Community Facilities Act (“Act”) of 1982 came about as a response to the lack of adequate financing for public capital facilities and services in the post-Proposition 13 era. State Legislators Mello and Roos sponsored this Bill, which was enacted into law by the California Legislature and is now Sections 53311 through 53363 of the California Government Code. The Act authorizes a local governmental agency, such as a school district or city, to form a Community Facilities District (“CFD”) or (“District”) within a defined set of boundaries for the purposes of providing public facilities and services. A CFD is formed for financing purposes only and is governed by the agency that formed it.

### **A. FORMATION**

The Board of Supervisors of the County of San Diego (“Board”), in the State of California, pursuant to the terms and provisions of Chapter 2.5 of Part 1, of Division 2, of Title 5 of the Government Code of the State of California, as amended (the “Act”), adopted a Resolution of Formation for County of San Diego Community Facilities District No. 2019-03 (Park Circle Maintenance).

### **B. BOUNDARIES AND DEVELOPMENT SUMMARY**

CFD No. 2019-03 encompasses approximately 73.9 gross acres of land in the County of San Diego, located north of Mirar De Valle Road and west of Valley center Road. At build-out, CFD No. 2019-03 currently consists of 332 residential units.

### **C. BONDS**

No bonds have been or will be issued. CFD No. 2019-03 will only be used to fund ongoing public services.

### **D. FINANCED SERVICES**

The purpose of CFD No. 2019-03 is to provide maintenance, servicing and replacement of (a) park and recreational facilities and amenities; (b) walls and fencing; (c) signage located in public right-of-way, property owned by the County or property owner which the County has an easement or similar right allowing the

County to maintain such facilities; (d) trails and pathways; and (e) storm drain facilities and storm water treatment devices.

## **I. LEVY SUMMARY OVERVIEW**

---

### **A. FISCAL YEAR 2026/27 LEVY AMOUNTS**

The following table summarizes the amounts estimated to be levied (including handbilled/direct billed charges) for Fiscal Year 2026/27 for the District.

<b>District</b>	<b>Parcel Count <sup>(1)</sup></b>	<b>Charge Amount <sup>(1)</sup></b>
CFD 2019-03	332	\$339,934.80

<sup>(1)</sup> Preliminary, subject to change.

### **B. FISCAL YEAR 2026/27 HANDBILL AMOUNTS**

The following table summarizes the amounts expected to be billed directly to the property owner rather than placed on the Secured Property Tax Roll, due to the tax-exempt status in Fiscal Year 2026/27 for the District.

<b>Parcel Count</b>	<b>Charge Amount</b>
N/A	\$0.00

## **II. DELINQUENCY AND FORECLOSURE STATUS**

---

### **A. DELINQUENCY SUMMARY**

The following table summarizes delinquencies for the most recent fiscal year and the cumulative for all years with delinquencies as of February 2, 2026.

<b>District</b>	<b>Summary for Most Recent Fiscal Year<sup>(1)</sup></b>		<b>Cumulative Summary All Years with Delinquencies</b>	
CFD 2019-03	\$3,452.89	2.11%	\$4,409.57	0.68%

<sup>(1)</sup> Most recent fiscal year delinquency is for first installment only.

## **III. SPECIAL TAX LEVY AND METHOD OF APPORTIONMENT**

---

The methodology employed to calculate and apportion the special tax is in accordance with the document entitled Rate and Method of Apportionment (“RMA”). The RMA is hereby referenced and summarized but not included in this report, however the official document can be requested and provided by the County’s special tax administrator Willdan Financial Services.

### A. RATE AND METHOD OF APPORTIONMENT

Pursuant to Section D of the Rate and Method of Apportionment, commencing with Fiscal Year 2019/20 and for each following fiscal year, the CFD administrator shall determine the Special Tax Requirement and shall levy the Special Tax until the total Special Tax levy equals the Special Tax Requirement.

Developed Property means for each fiscal year, all Taxable Property, exclusive of Taxable Public Property and Taxable Property Owner Association Property, for which a building permit for new construction was issued on or before May 1 of the Fiscal Year preceding the Fiscal Year for which the Special Taxes are being levied.

The Special Tax shall be levied on each Assessor’s Parcel of Developed Property up to 100% of the applicable Maximum Special Tax. If additional monies are needed to satisfy the Special Tax Requirement for Park Services after the first step has been completed, the Special Tax shall be levied Proportionately on each Assessor’s Parcel of Undeveloped Property at up to 100% of the Maximum Special Tax for Undeveloped Property.

### B. SPECIAL TAX SPREAD

The following table summarizes the number of parcels/units in each land use classification as well as the Applied Special Tax Rate for each classification.

Land Use Classification	Preliminary No. of Parcels/ Units	2026/27 Preliminary Applied Special Tax Rate per Unit	2026/27 Preliminary Dollars Levied
Residential Property	332 units	\$1,023.90	\$339,934.80
<b>Total</b>			<b>\$339,934.80</b>

### C. MAXIMUM AND APPLIED SPECIAL TAX RATES

The following table summarizes the percent of the Applied Special Tax to the Maximum Special Tax rate.

Land Use Classification	2026/27 Maximum Special Tax Rate per Unit <sup>(1)</sup>	2026/27 Preliminary Applied Special Tax Rate per Unit	Percent of Maximum
Residential Property	\$1,023.91	\$1,023.90	99.99%
Undeveloped Property	\$11,628.44/Acre	N/A	N/A

<sup>(1)</sup>Based on the Rate and Method of Apportionment, the maximum special tax rates have been escalated by the Consumer Price Index, but not less than two percent (2.00%) and not greater than six percent (6.00%) over the prior fiscal year.

#### D. APPLIED SPECIAL TAX PROGRESSION

The following table summarizes the percent change of Fiscal Year 2026/27 Applied Special Tax Rate as compared to Fiscal Year 2025/26 Applied Special Tax Rate.

Land Use Classification	2026/27 Preliminary Applied Special Tax Rate	2025/26 Applied Special Tax Rate	Percent Change from 2025/26
Residential Property	\$1,023.90	\$986.54	3.78%
Undeveloped Property	N/A	N/A	N/A

***EXHIBIT A***

---

***COUNTY OF SAN DIEGO CFD 2019-03***

***Fiscal Year 2026/27 Charge Detail Report***

**San Diego, County of**  
**CFD No. 2019-03 (Park Circle Maintenance)**  
**Fiscal Year 2026-27 Charge Detail Report**

APN	Situs Address	Total Charge
186-241-01-00	27903 MOOSA CREEK WAY	\$1,023.90
186-241-02-00	27907 MOOSA CREEK WAY	1,023.90
186-241-03-00	27911 MOOSA CREEK WAY	1,023.90
186-241-04-00	27915 MOOSA CREEK WAY	1,023.90
186-241-05-00	27919 MOOSA CREEK WAY	1,023.90
186-241-06-00	27923 MOOSA CREEK WAY	1,023.90
186-241-07-00	27927 MOOSA CREEK WAY	1,023.90
186-241-08-00	27923 BARLEY CT	1,023.90
186-241-09-00	27928 BARLEY CT	1,023.90
186-241-10-00	27924 BARLEY CT	1,023.90
186-241-11-00	27920 BARLEY CT	1,023.90
186-241-12-00	27916 BARLEY CT	1,023.90
186-241-13-00	27912 BARLEY CT	1,023.90
186-241-14-00	27908 BARLEY CT	1,023.90
186-241-15-00	27904 BARLEY CT	1,023.90
186-241-16-00	27963 MOOSA CREEK WAY	1,023.90
186-241-17-00	27967 MOOSA CREEK WAY	1,023.90
186-241-18-00	27971 MOOSA CREEK WAY	1,023.90
186-241-19-00	27975 MOOSA CREEK WAY	1,023.90
186-241-20-00	27979 MOOSA CREEK WAY	1,023.90
186-241-21-00	27983 MOOSA CREEK WAY	1,023.90
186-241-22-00	27987 MOOSA CREEK WAY	1,023.90
186-241-23-00	28003 MOOSA CREEK WAY	1,023.90
186-241-24-00	28007 MOOSA CREEK WAY	1,023.90
186-241-25-00	27917 AUTUMN CT	1,023.90
186-241-26-00	27921 AUTUMN CT	1,023.90
186-241-27-00	27933 AUTUMN CT	1,023.90
186-241-28-00	27937 AUTUMN CT	1,023.90
186-241-29-00	27941 AUTUMN CT	1,023.90
186-241-30-00	27945 AUTUMN CT	1,023.90
186-241-31-00	27949 AUTUMN CT	1,023.90
186-241-32-00	27953 AUTUMN CT	1,023.90
186-241-33-00	27957 AUTUMN CT	1,023.90
186-241-34-00	28004 MOOSA CREEK WAY	1,023.90
186-241-36-00	27984 MOOSA CREEK WAY	1,023.90
186-241-37-00	27980 MOOSA CREEK WAY	1,023.90
186-241-38-00	27976 MOOSA CREEK WAY	1,023.90
186-241-39-00	27972 MOOSA CREEK WAY	1,023.90
186-241-40-00	27968 MOOSA CREEK WAY	1,023.90
186-241-41-00	27964 MOOSA CREEK WAY	1,023.90
186-241-42-00	27960 MOOSA CREEK WAY	1,023.90
186-241-43-00	27956 MOOSA CREEK WAY	1,023.90
186-241-44-00	27948 MOOSA CREEK WAY	1,023.90
186-241-45-00	27952 MOOSA CREEK WAY	1,023.90
186-241-46-00	27944 MOOSA CREEK WAY	1,023.90
186-241-47-00	27940 MOOSA CREEK WAY	1,023.90
186-241-48-00	27936 MOOSA CREEK WAY	1,023.90
186-241-49-00	27932 MOOSA CREEK WAY	1,023.90
186-241-50-00	27808 SUNFLOWER CT	1,023.90
186-241-51-00	27804 SUNFLOWER CT	1,023.90

**San Diego, County of**  
**CFD No. 2019-03 (Park Circle Maintenance)**  
**Fiscal Year 2026-27 Charge Detail Report**

APN	Situs Address	Total Charge
186-241-52-00	27803 SUNFLOWER CT	1,023.90
186-241-53-00	27807 SUNFLOWER CT	1,023.90
186-241-54-00	27811 SUNFLOWER CT	1,023.90
186-241-55-00	27815 SUNFLOWER CT	1,023.90
186-241-56-00	27920 SUNFLOWER CT	1,023.90
186-241-57-00	27916 MOOSA CREEK WAY	1,023.90
186-241-58-00	27912 MOOSA CREEK WAY	1,023.90
186-242-01-00	27968 AUTUMN CT	1,023.90
186-242-02-00	27964 AUTUMN CT	1,023.90
186-242-03-00	27960 AUTUMN CT	1,023.90
186-242-04-00	27956 AUTUMN CT	1,023.90
186-242-05-00	27952 AUTUMN CT	1,023.90
186-242-06-00	27948 AUTUMN CT	1,023.90
186-242-07-00	27944 AUTUMN CT	1,023.90
186-242-08-00	27940 AUTUMN CT	1,023.90
186-242-09-00	27936 AUTUMN CT	1,023.90
186-242-10-00	27932 AUTUMN CT	1,023.90
186-242-11-00	27928 AUTUMN CT	1,023.90
186-242-12-00	27924 AUTUMN CT	1,023.90
186-242-13-00	27920 AUTUMN CT	1,023.90
186-242-14-00	27916 AUTUMN CT	1,023.90
186-242-15-00	27912 AUTUMN CT	1,023.90
186-242-16-00	27908 AUTUMN CT	1,023.90
186-242-17-00	27904 AUTUMN CT	1,023.90
186-242-19-00	28035 MOOSA CREEK WAY	1,023.90
186-242-20-00	28039 MOOSA CREEK WAY	1,023.90
186-242-21-00	28043 MOOSA CREEK WAY	1,023.90
186-242-22-00	28067 MOOSA CREEK WAY	1,023.90
186-242-23-00	28071 MOOSA CREEK WAY	1,023.90
186-242-24-00	28075 MOOSA CREEK WAY	1,023.90
186-242-25-00	28079 MOOSA CREEK WAY	1,023.90
186-242-26-00	28083 MOOSA CREEK WAY	1,023.90
186-242-27-00	28087 MOOSA CREEK WAY	1,023.90
186-242-28-00	28091 MOOSA CREEK WAY	1,023.90
186-242-29-00	28095 MOOSA CREEK WAY	1,023.90
186-242-30-00	28076 MOOSA CREEK WAY	1,023.90
186-242-31-00	28072 MOOSA CREEK WAY	1,023.90
186-242-32-00	28068 MOOSA CREEK WAY	1,023.90
186-242-33-00	28064 MOOSA CREEK WAY	1,023.90
186-242-35-00	28056 MOOSA CREEK WAY	1,023.90
186-242-36-00	28052 MOOSA CREEK WAY	1,023.90
186-242-37-00	28048 MOOSA CREEK WAY	1,023.90
186-242-38-00	28044 MOOSA CREEK WAY	1,023.90
186-242-39-00	28040 MOOSA CREEK WAY	1,023.90
186-242-40-00	28036 MOOSA CREEK WAY	1,023.90
186-242-41-00	28032 MOOSA CREEK WAY	1,023.90
186-242-43-00	28024 MOOSA CREEK WAY	1,023.90
186-242-44-00	28020 MOOSA CREEK WAY	1,023.90
186-242-45-00	28016 MOOSA CREEK WAY	1,023.90
186-242-46-00	28012 MOOSA CREEK WAY	1,023.90

**San Diego, County of**  
**CFD No. 2019-03 (Park Circle Maintenance)**  
**Fiscal Year 2026-27 Charge Detail Report**

APN	Situs Address	Total Charge
186-242-47-00	28008 MOOSA CREEK WAY	1,023.90
186-770-01-00	27838 SILO LN	1,023.90
186-770-02-00	27842 SILO LN	1,023.90
186-770-03-00	27846 SILO LN	1,023.90
186-770-04-00	27850 SILO LN	1,023.90
186-770-05-00	27854 SILO LN	1,023.90
186-770-06-00	27858 SILO LN	1,023.90
186-770-07-00	27862 SILO LN	1,023.90
186-770-08-00	27866 SILO LN	1,023.90
186-770-09-00	27870 SILO LN	1,023.90
186-770-10-00	27874 SILO LN	1,023.90
186-770-11-00	27878 SILO LN	1,023.90
186-770-12-00	27882 SILO LN	1,023.90
186-770-13-00	27886 SILO LN	1,023.90
186-770-14-00	27890 SILO LN	1,023.90
186-770-15-00	27894 SILO LN	1,023.90
186-770-16-00	27898 SILO LN	1,023.90
186-770-17-00	28095 HARVEST CT	1,023.90
186-770-18-00	28091 HARVEST CT	1,023.90
186-770-19-00	28087 HARVEST CT	1,023.90
186-770-20-00	28083 HARVEST CT	1,023.90
186-770-21-00	28079 HARVEST CT	1,023.90
186-770-22-00	28075 HARVEST CT	1,023.90
186-770-23-00	28071 HARVEST CT	1,023.90
186-770-24-00	28067 HARVEST CT	1,023.90
186-770-25-00	28063 HARVEST CT	1,023.90
186-770-26-00	28059 HARVEST CT	1,023.90
186-770-27-00	28055 HARVEST CT	1,023.90
186-770-28-00	28051 HARVEST CT	1,023.90
186-770-29-00	28047 HARVEST CT	1,023.90
186-770-30-00	28043 HARVEST CT	1,023.90
186-770-31-00	28039 HARVEST CT	1,023.90
186-770-32-00	28035 HARVEST CT	1,023.90
186-770-33-00	28031 HARVEST CT	1,023.90
186-770-34-00	28027 HARVEST CT	1,023.90
186-770-35-00	28023 HARVEST CT	1,023.90
186-770-36-00	28019 HARVEST CT	1,023.90
186-770-37-00	28015 HARVEST CT	1,023.90
186-770-38-00	28011 HARVEST CT	1,023.90
186-770-39-00	28007 HARVEST CT	1,023.90
186-770-40-00	28003 HARVEST CT	1,023.90
186-771-01-00	27765 HERITAGE LN	1,023.90
186-771-02-00	27761 HERITAGE LN	1,023.90
186-771-03-00	27757 HERITAGE LN	1,023.90
186-771-04-00	27753 HERITAGE LN	1,023.90
186-771-05-00	27749 HERITAGE LN	1,023.90
186-771-06-00	27745 HERITAGE LN	1,023.90
186-771-07-00	27741 HERITAGE LN	1,023.90
186-771-08-00	27737 HERITAGE LN	1,023.90
186-771-09-00	27733 HERITAGE LN	1,023.90

**San Diego, County of**  
**CFD No. 2019-03 (Park Circle Maintenance)**  
**Fiscal Year 2026-27 Charge Detail Report**

APN	Situs Address	Total Charge
186-771-10-00	27729 HERITAGE LN	1,023.90
186-771-11-00	27725 HERITAGE LN	1,023.90
186-771-12-00	27721 HERITAGE LN	1,023.90
186-771-13-00	27949 SILO LN	1,023.90
186-771-14-00	27945 SILO LN	1,023.90
186-771-15-00	27941 SILO LN	1,023.90
186-771-16-00	27937 SILO LN	1,023.90
186-771-17-00	27933 SILO LN	1,023.90
186-771-18-00	27929 SILO LN	1,023.90
186-771-19-00	27925 SILO LN	1,023.90
186-771-20-00	27921 SILO LN	1,023.90
186-771-21-00	27917 SILO LN	1,023.90
186-771-22-00	27913 SILO LN	1,023.90
186-771-23-00	27909 SILO LN	1,023.90
186-771-24-00	27905 SILO LN	1,023.90
186-771-25-00	27861 SILO LN	1,023.90
186-771-26-00	27857 SILO LN	1,023.90
186-771-27-00	27853 SILO LN	1,023.90
186-771-28-00	27849 SILO LN	1,023.90
186-771-29-00	27845 SILO LN	1,023.90
186-771-30-00	27841 SILO LN	1,023.90
186-771-31-00	27837 SILO LN	1,023.90
186-771-32-00	27833 SILO LN	1,023.90
186-771-33-00	27829 SILO LN	1,023.90
186-771-34-00	27825 SILO LN	1,023.90
186-771-35-00	27821 SILO LN	1,023.90
186-771-41-00	28004 HARVEST CT	1,023.90
186-771-42-00	28008 HARVEST CT	1,023.90
186-771-43-00	28012 HARVEST CT	1,023.90
186-771-44-00	28016 HARVEST CT	1,023.90
186-771-45-00	28020 HARVEST CT	1,023.90
186-771-46-00	28024 HARVEST CT	1,023.90
186-771-47-00	28028 HARVEST CT	1,023.90
186-771-48-00	28032 HARVEST CT	1,023.90
186-771-49-00	28036 HARVEST CT	1,023.90
186-771-50-00	28040 HARVEST CT	1,023.90
186-771-51-00	27767 OLD DAIRY WAY	1,023.90
186-771-52-00	27763 OLD DAIRY WAY	1,023.90
186-771-53-00	27759 OLD DAIRY WAY	1,023.90
186-771-54-00	27755 OLD DAIRY WAY	1,023.90
186-771-55-00	27751 OLD DAIRY WAY	1,023.90
186-771-56-00	27747 OLD DAIRY WAY	1,023.90
186-771-57-00	27743 OLD DAIRY WAY	1,023.90
186-771-58-00	27739 OLD DAIRY WAY	1,023.90
186-771-59-00	27735 OLD DAIRY WAY	1,023.90
186-771-60-00	27731 OLD DAIRY WAY	1,023.90
186-771-61-00	27730 OLD DAIRY WAY	1,023.90
186-771-62-00	27734 OLD DAIRY WAY	1,023.90
186-771-63-00	27738 OLD DAIRY WAY	1,023.90
186-771-64-00	27742 OLD DAIRY WAY	1,023.90

**San Diego, County of**  
**CFD No. 2019-03 (Park Circle Maintenance)**  
**Fiscal Year 2026-27 Charge Detail Report**

APN	Situs Address	Total Charge
186-771-65-00	27746 OLD DAIRY WAY	1,023.90
186-771-66-00	27750 OLD DAIRY WAY	1,023.90
186-771-67-00	27754 OLD DAIRY WAY	1,023.90
186-771-68-00	27758 OLD DAIRY WAY	1,023.90
186-771-69-00	27762 OLD DAIRY WAY	1,023.90
186-771-70-00	27766 OLD DAIRY WAY	1,023.90
186-772-01-00	27717 HERITAGE LN	1,023.90
186-772-02-00	27713 HERITAGE LN	1,023.90
186-772-03-00	27709 HERITAGE LN	1,023.90
186-772-04-00	27705 HERITAGE LN	1,023.90
186-772-05-00	27661 HERITAGE LN	1,023.90
186-772-06-00	27657 HERITAGE LN	1,023.90
186-772-07-00	27653 HERITAGE LN	1,023.90
186-772-08-00	27649 HERITAGE LN	1,023.90
186-772-09-00	27645 HERITAGE LN	1,023.90
186-772-10-00	27621 KONYN CT	1,023.90
186-772-11-00	27617 KONYN CT	1,023.90
186-772-12-00	27613 KONYN CT	1,023.90
186-772-13-00	27609 KONYN CT	1,023.90
186-772-14-00	27605 KONYN CT	1,023.90
186-772-15-00	27604 HERITAGE LN	1,023.90
186-772-16-00	27608 HERITAGE LN	1,023.90
186-772-17-00	27612 HERITAGE LN	1,023.90
186-772-18-00	27616 HERITAGE LN	1,023.90
186-772-19-00	27620 HERITAGE LN	1,023.90
186-772-20-00	27605 HERITAGE LN	1,023.90
186-772-21-00	27609 HERITAGE LN	1,023.90
186-772-22-00	27613 HERITAGE LN	1,023.90
186-772-23-00	27617 HERITAGE LN	1,023.90
186-772-24-00	27621 HERITAGE LN	1,023.90
186-772-25-00	27625 HERITAGE LN	1,023.90
186-772-26-00	27629 HERITAGE LN	1,023.90
186-772-27-00	27633 HERITAGE LN	1,023.90
186-772-28-00	27637 HERITAGE LN	1,023.90
186-772-29-00	27641 HERITAGE LN	1,023.90
186-772-34-00	27605 PARK CIRCLE WAY	1,023.90
186-772-35-00	27609 PARK CIRCLE WAY	1,023.90
186-772-36-00	27613 PARK CIRCLE WAY	1,023.90
186-772-37-00	27617 PARK CIRCLE WAY	1,023.90
186-772-38-00	27621 PARK CIRCLE WAY	1,023.90
186-772-39-00	27625 PARK CIRCLE WAY	1,023.90
186-772-40-00	27629 PARK CIRCLE WAY	1,023.90
186-772-41-00	27633 PARK CIRCLE WAY	1,023.90
186-772-42-00	27637 PARK CIRCLE WAY	1,023.90
186-772-43-00	27641 PARK CIRCLE WAY	1,023.90
186-772-44-00	27645 PARK CIRCLE WAY	1,023.90
186-772-45-00	27649 PARK CIRCLE WAY	1,023.90
186-772-46-00	27653 PARK CIRCLE WAY	1,023.90
186-772-47-00	27657 PARK CIRCLE WAY	1,023.90
186-772-48-00	27661 PARK CIRCLE WAY	1,023.90

**San Diego, County of**  
**CFD No. 2019-03 (Park Circle Maintenance)**  
**Fiscal Year 2026-27 Charge Detail Report**

APN	Situs Address	Total Charge
186-772-49-00	27665 PARK CIRCLE WAY	1,023.90
186-780-02-00	27818 SILO LN	1,023.90
186-780-03-00	27814 SILO LN	1,023.90
186-780-04-00	27810 SILO LN	1,023.90
186-780-05-00	27806 SILO LN	1,023.90
186-780-06-00	27802 SILO LN	1,023.90
186-780-07-00	27822 SILO LN	1,023.90
186-780-08-00	27826 SILO LN	1,023.90
186-780-09-00	27830 SILO LN	1,023.90
186-780-10-00	27834 SILO LN	1,023.90
186-780-12-00	27778 HERITAGE LN	1,023.90
186-780-13-00	27776 HERITAGE LN	1,023.90
186-780-14-00	27774 HERITAGE LN	1,023.90
186-780-15-00	27772 HERITAGE LN	1,023.90
186-780-16-00	27770 HERITAGE LN	1,023.90
186-780-17-00	27768 HERITAGE LN	1,023.90
186-780-18-00	27766 HERITAGE LN	1,023.90
186-780-19-00	27764 HERITAGE LN	1,023.90
186-780-20-00	27762 HERITAGE LN	1,023.90
186-780-21-00	27760 HERITAGE LN	1,023.90
186-780-22-00	27758 HERITAGE LN	1,023.90
186-780-23-00	27756 HERITAGE LN	1,023.90
186-781-01-00	27754 HERITAGE LN	1,023.90
186-781-02-00	27752 HERITAGE LN	1,023.90
186-781-03-00	27750 HERITAGE LN	1,023.90
186-781-04-00	27748 HERITAGE LN	1,023.90
186-781-05-00	27746 HERITAGE LN	1,023.90
186-781-06-00	27744 HERITAGE LN	1,023.90
186-781-07-00	27742 HERITAGE LN	1,023.90
186-781-08-00	27740 HERITAGE LN	1,023.90
186-781-09-00	27738 HERITAGE LN	1,023.90
186-781-10-00	27736 HERITAGE LN	1,023.90
186-781-11-00	27734 HERITAGE LN	1,023.90
186-781-12-00	27732 HERITAGE LN	1,023.90
186-781-13-00	27730 HERITAGE LN	1,023.90
186-781-14-00	27728 HERITAGE LN	1,023.90
186-781-15-00	27726 HERITAGE LN	1,023.90
186-781-16-00	27724 HERITAGE LN	1,023.90
186-781-17-00	27722 HERITAGE LN	1,023.90
186-781-20-00	27716 HERITAGE LN	1,023.90
186-781-21-00	27714 HERITAGE LN	1,023.90
186-781-22-00	27712 HERITAGE LN	1,023.90
186-781-23-00	27710 HERITAGE LN	1,023.90
186-781-24-00	27708 HERITAGE LN	1,023.90
186-781-25-00	27706 HERITAGE LN	1,023.90
186-781-26-00	27704 HERITAGE LN	1,023.90
186-781-27-00	27702 HERITAGE LN	1,023.90
186-781-33-00	27718 HERITAGE LN	1,023.90
186-781-35-00	27720 HERITAGE LN	1,023.90
186-782-01-00	27698 HERITAGE LN	1,023.90

**San Diego, County of**  
**CFD No. 2019-03 (Park Circle Maintenance)**  
**Fiscal Year 2026-27 Charge Detail Report**

APN	Situs Address	Total Charge
186-782-02-00	27694 HERITAGE LN	1,023.90
186-782-03-00	27690 HERITAGE LN	1,023.90
186-782-04-00	27686 HERITAGE LN	1,023.90
186-782-05-00	27682 HERITAGE LN	1,023.90
186-782-06-00	27678 HERITAGE LN	1,023.90
186-782-07-00	27674 HERITAGE LN	1,023.90
186-782-08-00	27670 HERITAGE LN	1,023.90
186-782-09-00	27668 HERITAGE LN	1,023.90
186-782-10-00	27662 HERITAGE LN	1,023.90
186-782-11-00	27658 HERITAGE LN	1,023.90
186-782-12-00	27654 HERITAGE LN	1,023.90
186-782-13-00	27650 HERITAGE LN	1,023.90
186-782-14-00	27646 HERITAGE LN	1,023.90
186-782-15-00	27642 HERITAGE LN	1,023.90
186-782-16-00	27638 HERITAGE LN	1,023.90
186-782-17-00	27634 HERITAGE LN	1,023.90
186-782-18-00	27664 KONYN CT	1,023.90
186-782-19-00	27660 KONYN CT	1,023.90
186-782-20-00	27656 KONYN CT	1,023.90
186-782-21-00	27652 KONYN CT	1,023.90
186-782-22-00	27648 KONYN CT	1,023.90
186-782-23-00	27644 KONYN CT	1,023.90
186-782-24-00	27640 KONYN CT	1,023.90
186-782-25-00	27636 KONYN CT	1,023.90
186-782-26-00	27632 KONYN CT	1,023.90
186-782-27-00	27628 KONYN CT	1,023.90
186-782-28-00	27624 KONYN CT	1,023.90
186-782-29-00	27620 KONYN CT	1,023.90
186-782-30-00	27616 KONYN CT	1,023.90
186-782-31-00	27612 KONYN CT	1,023.90
186-782-32-00	27608 KONYN CT	1,023.90
186-782-33-00	27604 KONYN CT	1,023.90
<b>TOTAL:</b>		<b>\$339,934.80</b>
<b>TOTAL PARCEL COUNT:</b>		<b>332</b>

***EXHIBIT B***

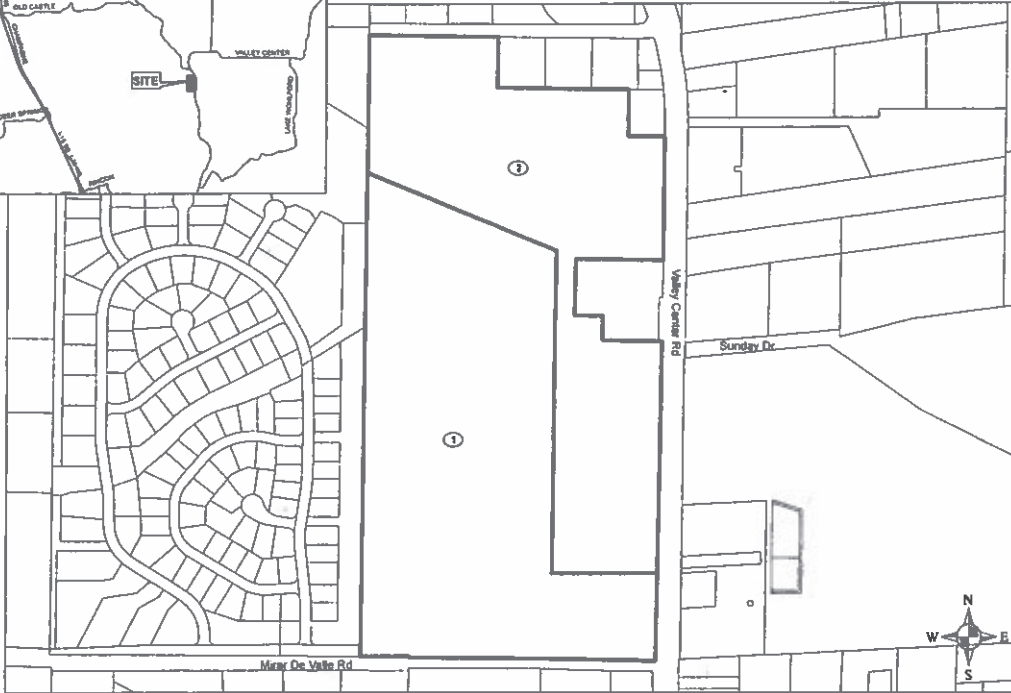
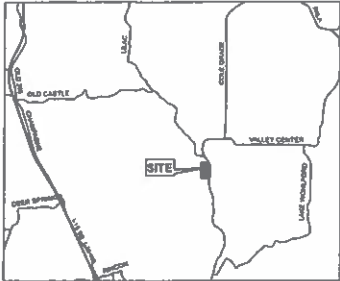
---

***COUNTY OF SAN DIEGO CFD 2019-03***

***Boundary Diagram***

# MAP OF PROPOSED BOUNDARIES OF COUNTY OF SAN DIEGO COMMUNITY FACILITIES DISTRICT NO. 2019-03 (PARK CIRCLE MAINTENANCE)

COUNTY OF SAN DIEGO  
STATE OF CALIFORNIA



FILED IN THE OFFICE OF THE CLERK OF THE BOARD OF SUPERVISORS OF THE COUNTY OF SAN DIEGO THIS 17 DAY OF May, 2019.

I HEREBY CERTIFY THAT THE WITHIN MAP SHOWING PROPOSED BOUNDARIES OF THE COUNTY OF SAN DIEGO COMMUNITY FACILITIES DISTRICT NO. 2019-03 PARK CIRCLE MAINTENANCE, COUNTY OF SAN DIEGO, STATE OF CALIFORNIA, WAS APPROVED BY THE BOARD OF SUPERVISORS OF THE COUNTY OF SAN DIEGO AT A REGULAR MEETING THEREOF, HELD ON THE 17 DAY OF May, 2019, BY ITS RESOLUTION NO. 19-022

Andres Ponce  
CLERK OF THE BOARD OF SUPERVISORS  
COUNTY OF SAN DIEGO

FILED THIS 16<sup>th</sup> DAY OF May, 2019, AT THE HOUR OF 10:20 O'CLOCK, A.M. IN THE BOOK 417 OF MAPS OF ASSESSMENT AND COMMUNITY FACILITIES DISTRICTS, PAGE(S) 86 AND AS INSTRUMENT NO. 2019-7000178 IN THE OFFICE OF THE COUNTY RECORDER IN THE COUNTY OF SAN DIEGO, STATE OF CALIFORNIA.

Christina R...  
BY DEPUTY  
COUNTY RECORDER Edw. J. Deaconburg, Jr.  
COUNTY OF SAN DIEGO  
STATE OF CALIFORNIA

THE LINES AND DIMENSIONS OF EACH LOT OR PARCEL DIMENSIONS SHOWN ON THIS MAP SHALL BE THOSE LINES AND DIMENSIONS AS SHOWN ON THE SAN DIEGO COUNTY ASSESSOR'S MAPS FOR THOSE PARCELS LISTED.

THE SAN DIEGO COUNTY ASSESSOR'S MAPS SHALL GOVERN FOR ALL DETAILS CONCERNING THE LINES AND DIMENSIONS OF SUCH LOTS OR PARCELS.

MAP REFERENCE NUMBER	ASSESSOR'S PARCEL NUMBER
1	186-240-12-00
2	186-240-15-00



**Legend**  
 DISTRICT BOUNDARY



BK 47 PG 85

2019-7000178

BK 47 PG 85 2019-7000178

## ***EXHIBIT C***

---

***COUNTY OF SAN DIEGO CFD 2019-03***

***Delinquency Management***

# DELINQUENCY SUMMARY BY DISTRICT

## San Diego County Parks & Rec

### CFD No. 2019-03 (Park Circle Maintenance)

DUE DATE	DOLLARS LEVIED	DOLLARS DELINQUENT	% DOLLARS DELINQUENT	PARCELS LEVIED	PARCELS DELINQUENT	DATA DATE
2024/25-1	\$158,808.88	\$478.34	0.30%	332	1	02/02/2026
2024/25-2	\$158,808.88	\$478.34	0.30%	332	1	02/02/2026
2025/26-1	\$163,765.64	\$3,452.89	2.11%	332	7	02/02/2026
2025/26-2	\$163,765.64	\$0.00	0.00%	332	0	02/02/2026
<b>TOTAL</b>	<b>\$645,149.04</b>	<b>\$4,409.57</b>	<b>0.68%</b>			