

**CLERK OF THE BOARD OF SUPERVISORS
EXHIBIT/DOCUMENT LOG**

MEETING DATE & AGENDA NO. 05/20/2025 #12

STAFF DOCUMENTS (Numerical)

No.	Presented by:	Description:
1	Staff	14-page PowerPoint presentation

2

3

4

5

PUBLIC DOCUMENTS (Alphabetical)

No.	Presented by:	Description:
A	N/A	

B

C

D

E

F



**RECEIVE UPDATE ON THE ALTERNATIVES TO INCARCERATION WORK PLAN,
APPROVAL IN PRINCIPLE TO LEASE SPACE FOR A RESOURCE AND REENTRY
HUB, AND AUTHORITY FOR FUTURE ATI-RELATED GRANTS**

Public Safety

ANDREW STRONG
DEPUTY CHIEF ADMINISTRATIVE OFFICER
PUBLIC SAFETY

May 20, 2025

ITEM #12

DR. SAYONE THIALOLIPAVAN
PUBLIC HEALTH OFFICER
HEALTH AND HUMAN SERVICES AGENCY

DANTE DAUZ
DIRECTOR, PREVENTION,
DIVERSION AND REENTRY
PUBLIC SAFETY

DR. ANDREA DAUBER GRIFFIN
ADMINISTRATOR, JUSTICE
SYSTEM INTEGRATION
PUBLIC SAFETY

DR. RICARDO BASURTO-DAVILA
CHIEF EVALUATION OFFICER
OFFICE OF EVALUATION,
PERFORMANCE, AND ANALYTICS

Background

October 2021

Board direction to explore data-driven Alternatives to Incarceration (ATI)

April 2023

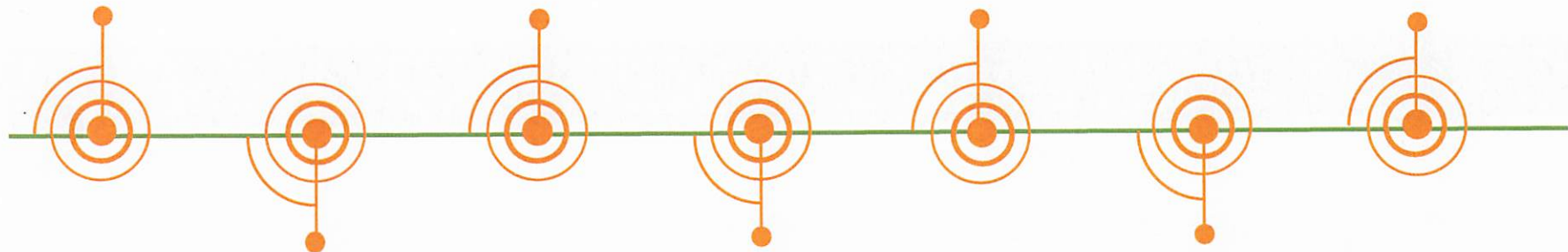
SANDAG issues a report with 50+ recommendations

March 2024

Board receives work plan updates and approves a Resource and Reentry Hub

December 2024

Board directs to extend transportation and housing connections for people leaving detention and reentry facilities



2022-2023

County contracts with SANDAG for data analysis, stakeholder input, and recommendations

May 2023

County adopts 20-point ATI Work Plan

August 2024

Board approves a local Fair Chance Ordinance



ATI Advisory Group



Formed in October 2023



8 community members and representatives from 13 County and City justice and health partners



Tasked with reviewing the progress of the ATI work plan & advising the County on next steps



Community Engagement

Community Listening Sessions & Focus Groups with Justice-involved Individuals



Industry Days for Resource and Reentry Hub



Resource Fairs & Visits with Community Providers



San Diego Reentry Roundtable



Updates to Initial ATI Work Plan Items

Housing
Connections
from Jail (Work
Plan #3a)

Care
Coordination
and Housing
(Work Plan #3b)

Homeless Pop-
up Resource
Fairs (Work Plan
#12)

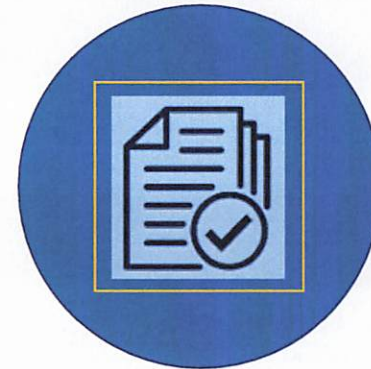
Transitions
Clinic Network
(Work Plan #6)



Resource and Reentry Hub



Justice-involved individuals
can meet multiple needs in
one visit



Request for Proposals (RFP) to
open following today's action on
lease authority



Measurement & Evaluation (M&E) Framework

Program Design Analysis

Report Due to ATI
Leadership in
Aug 2025

Performance Measurement

Data Stories Launch
Dec 2025

Process Evaluation

Report Due to ATI
Leadership in
2026

Equity Analysis

Report Due to ATI
Leadership in
2027

Future Phase: Impact Evaluation



Performance Measurement Activities

15 Key Performance Indicators

Data Collection and Analysis Plan

Baseline Data Collection

Data Storytelling

Community
Engagement



Data Storytelling

Data Stories



Victor, 58
Justice-Involved



David, 76
Family Member of
Justice-Involved



Program Data



Hyperlinks to
program information



Pathways to
services



Timing of service
delivery

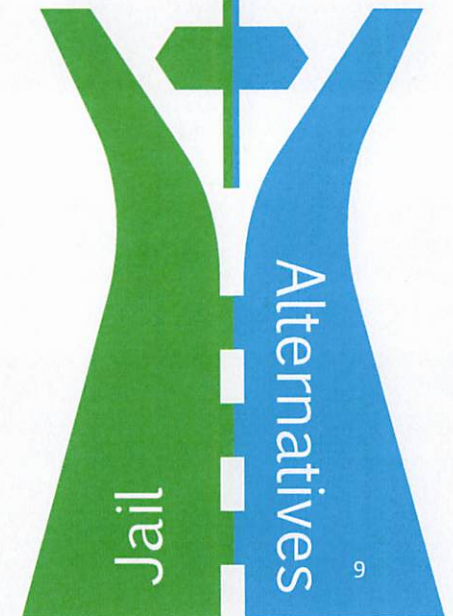


Equity data on
program participants

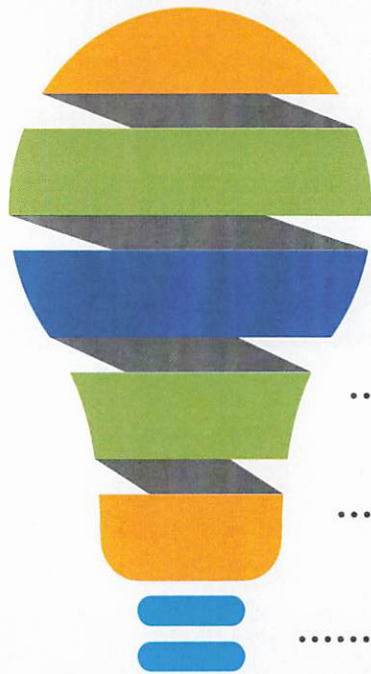
Impact Data

Population
Trends

Program
Data



New ATI Work Plan Actions



..... Develop new pathways to services in lieu of jail or prosecution to resolve low-level criminal cases

..... Launch a Resource and Reentry Hub

..... Expand in-custody rehabilitative programming

..... Host job fairs with career pathways & peer roles for justice-involved individuals

..... Expand universal transportation, care coordination, & housing for those released from County facilities

..... Update and re-procure community care coordination & housing programs



Extending Transit and Phone Access



Bus Passes

- Provide bus passes to anyone requesting them
- Create new handouts and signs to help people find and use public transportation available from each jail



Phone Access

- Installed cell phone chargers in facility lobbies to support communication and connections



Expanding Care Coordination and Housing



Enhanced Support Services

- Access to transportation, care coordination, and housing support with self-referral and/or immediate support pathways:
 - Include transportation services from all jails to the Resource and Reentry Hub
 - Pilot self-referral and engagement pathways in existing ATI programs
 - Re-procure Community Care Coordination (C3) services with key partners to address diverse client needs



Recommendations

- Receive a presentation on Alternatives to Incarceration, including updates to work plan actions, new planned and proposed actions, and evaluation.
- Approve actions related to siting a Resource and Reentry Hub (Hub):
 - Find that the proposed action is not an approval of a project as defined by CEQA pursuant to Section 15378 (b)(5) of the State CEQA guidelines
 - Approve in principle the lease of approximately 6,000 square feet of office space in the central San Diego region for the Hub
 - Authorize the Director, Department of General Services, to conduct a site search, negotiate a lease, and upon successful negotiations, return to the Board for approval of the lease agreement
- Waive Board Policy B-29, Fees, Grants, Revenue Contracts – Departmental Responsibility for Cost Recovery, which requires prior approval of grant applications and full cost recovery for grants, and authorize the Deputy Chief Administrative Officer for Public Safety or the Health and Human Services Agency, to submit grant applications and execute all required grant documents including any annual extensions, amendments and/or revisions that do not materially impact or alter the services level or funding.



**RECEIVE UPDATE ON THE ALTERNATIVES TO INCARCERATION WORK PLAN,
APPROVAL IN PRINCIPLE TO LEASE SPACE FOR A RESOURCE AND REENTRY
HUB, AND AUTHORITY FOR FUTURE ATI-RELATED GRANTS**

Public Safety

ANDREW STRONG
DEPUTY CHIEF ADMINISTRATIVE OFFICER
PUBLIC SAFETY

May 20, 2025

ITEM #12

DR. SAYONE THIHALOLIPAVAN
PUBLIC HEALTH OFFICER
HEALTH AND HUMAN SERVICES AGENCY

DANTE DAUZ
DIRECTOR, PREVENTION,
DIVERSION AND REENTRY
PUBLIC SAFETY

DR. ANDREA DAUBER GRIFFIN
ADMINISTRATOR, JUSTICE
SYSTEM INTEGRATION
PUBLIC SAFETY

DR. RICARDO BASURTO-DAVILA
CHIEF EVALUATION OFFICER
OFFICE OF EVALUATION,
PERFORMANCE, AND ANALYTICS