

**CLERK OF THE BOARD OF SUPERVISORS
EXHIBIT/DOCUMENT LOG**

MEETING DATE & AGENDA NO. 04/08/2025 #16

STAFF DOCUMENTS (Numerical)

No.	Presented by:	Description:
1	Staff	18 Page PowerPoint

2

3

4

5

PUBLIC DOCUMENTS (Alphabetical)

No.	Presented by:	Description:
A	N/A	

B

C

D

E

F

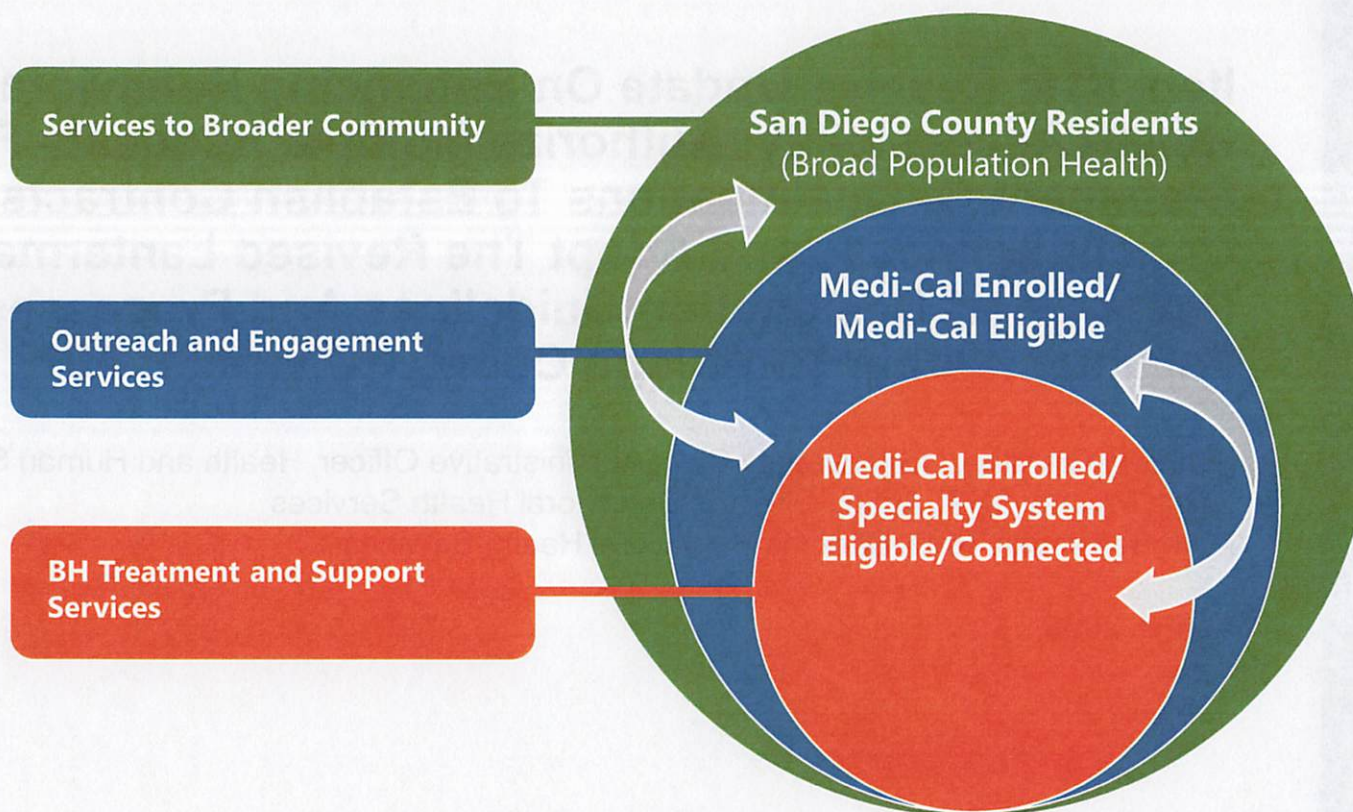


Item #16: Receive Update On Enhancing Behavioral Health Accessibility; Authorize Multiple Requests For Statement Of Qualifications To Establish Contracts For Critical Services; And Adopt The Revised Lanterman-Petris-Short Designation Guidelines And Processes For Facilities Within San Diego County (Districts: All)

Kimberly Giardina, DSW, Deputy Chief Administrative Officer, Health and Human Services Agency
Nadia Privara, MPA, Acting Director, Behavioral Health Services
Luke Bergmann, PhD, Director, Behavioral Health Services

April 8, 2025

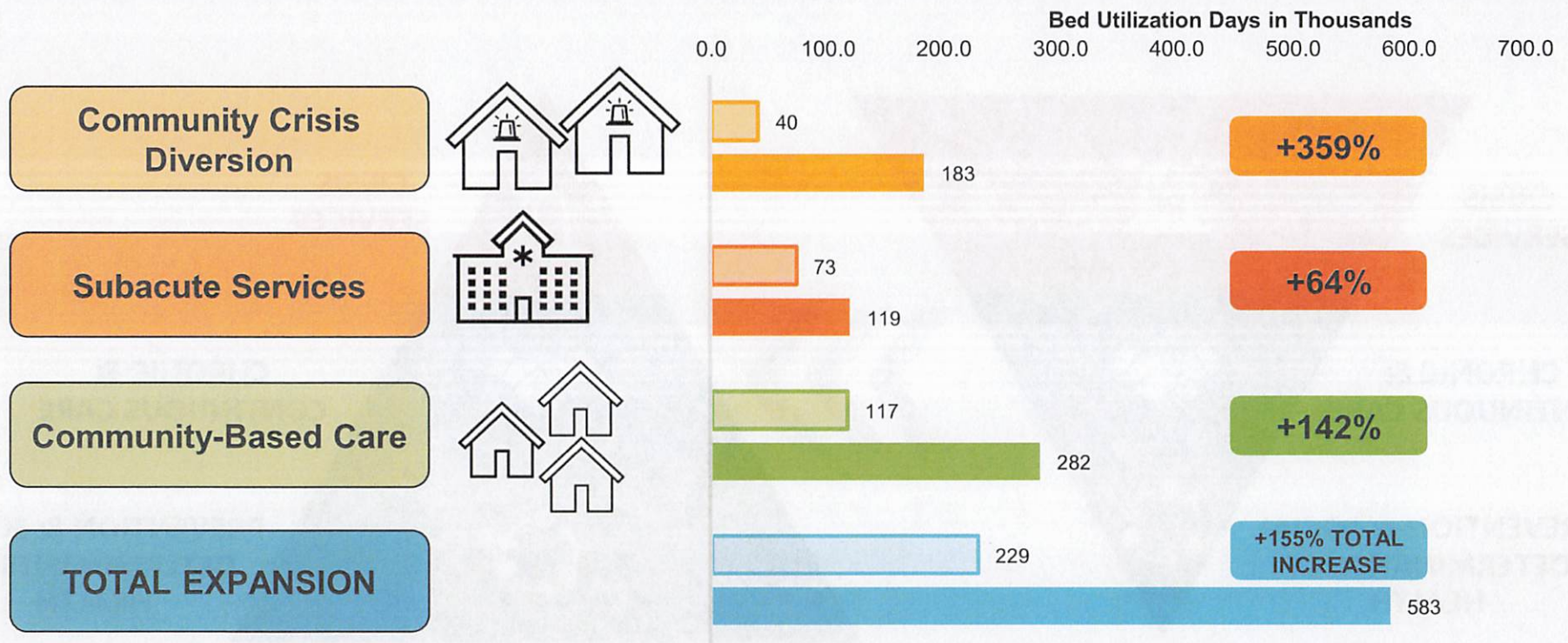
Who We Serve



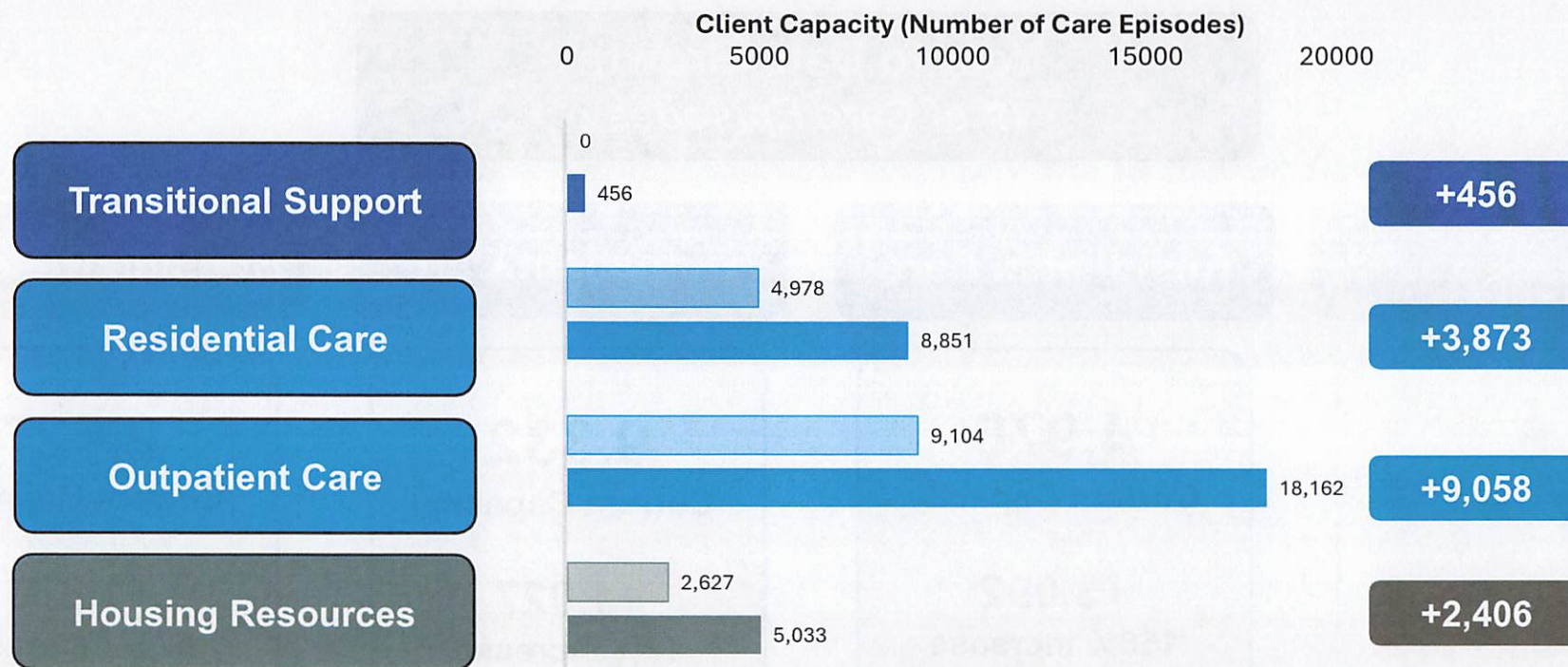
Transforming Behavioral Health Care



Mental Health Optimal Care Pathways Model



Substance Use Disorder Optimal Care Pathways Model



Growth in Substance Use Services Since 2021



Year to Date Growth (# of Care Episodes)

Transitional Support

0

Current Capacity

0

Growth since FY21

Residential Care

4,978

Current Capacity

+3,092

158% increase
since FY21

Outpatient Care

9,332

Current Capacity

+1,027

12% increase
since FY21

Housing Resources

2,627

Current Capacity

+1,870

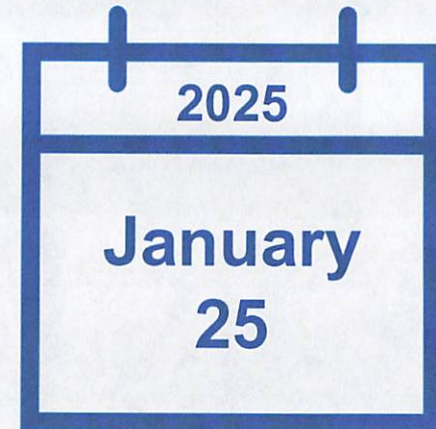
67% increase
since FY21

Actions to Improve Access to Care



Explore partnerships and funding strategies in the following domains:

- Psychiatric acute inpatient care
- Partial hospitalization program and intensive outpatient program (PHP/IOP)
- Substance use disorder treatment services
- Licensed board and care capacity
- Local academic institutions



Psychiatric Acute Inpatient Care



Paradise Valley Hospital



- Psychiatric inpatient care for adults experiencing psychiatric emergencies
- Highest level of acute behavioral health treatment
- 39 beds currently available with negotiations for 30 additional beds underway

Partial Hospitalization Programs (PHP) and Intensive Outpatient Programs (IOP)



Substance Use Treatment Services



- Established partnership with Tribal 638 clinic **Revive Pathway**
- Launched **San Diego Relay** in select emergency departments
- Enhanced substance use services in preparation for launch of **SB 43**



- Building capacity within the County-owned **Substance Use Residential and Treatment Treatments Services (SURTS)** facility
- Adding new **Chemical Dependency Recovery Hospital (CDRH)** beds

Substance Use Treatment Services



- Established partnership with Tribal 638 clinic **Revive Pathway**
- Launched **San Diego Relay** in select emergency departments
- Enhanced substance use services in preparation for launch of **SB 43**



- Building capacity within the County-owned **Substance Use Residential and Treatment Services (SURTS)** facility
- Adding new **Chemical Dependency Recovery Hospital (CDRH)** beds

Licensed Board and Care Capacity



Mental Health OCP identified the need for 400 additional Board and Care beds across the county

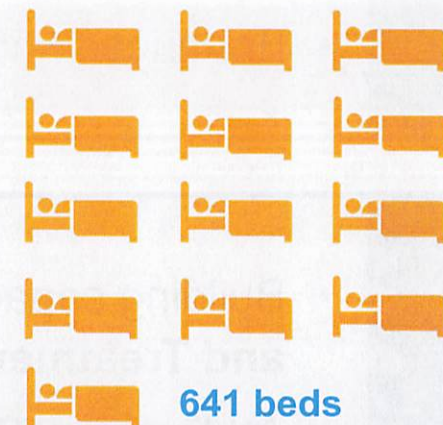
2022 Capacity



Current Capacity



Optimal Capacity

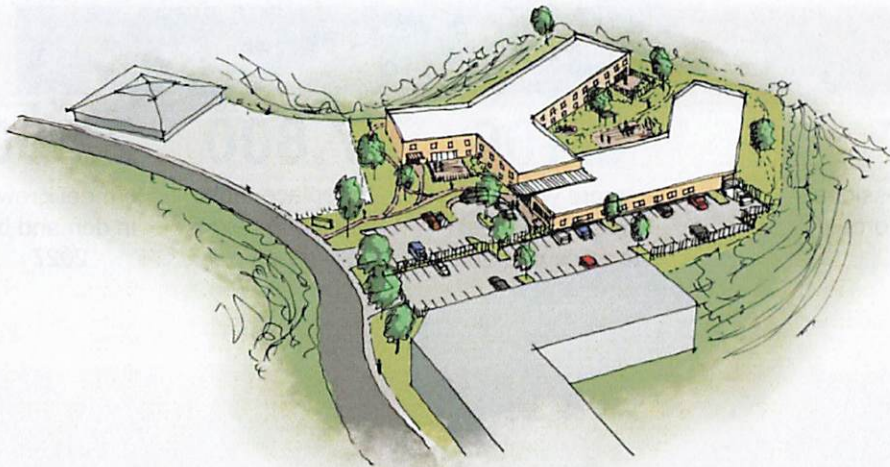


221 beds established through Behavioral Health Bridge Housing Grant

Licensed Board and Care Capacity

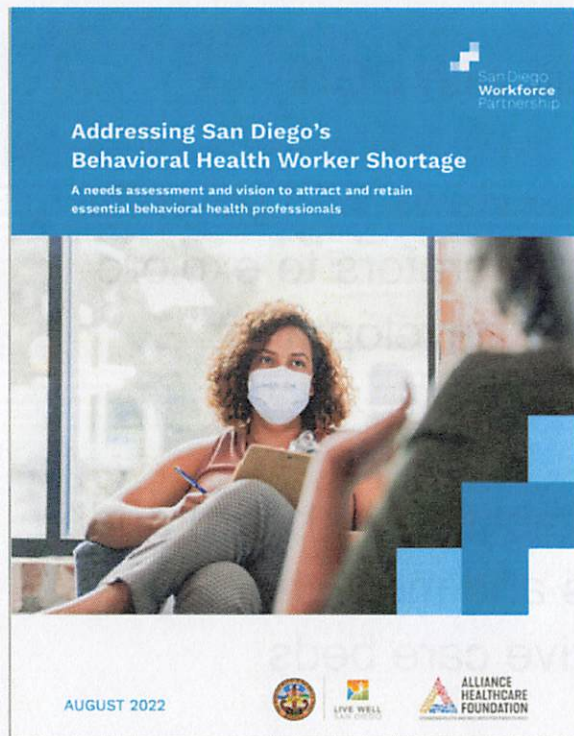


Central Region Community-Based Care Facility



- Partnership with DGS
- Formal interviews with potential developer/operators to explore funding and development options
- Would establish 110 board and care beds and more than 10 recuperative care beds

Workforce Report



ELEVATE Behavioral Health Workforce Fund



Mental Health Services Act Innovation Program

- Board approved for \$75 million over five years
- Identify innovative, new, or adaptive approaches to help people enter, advance, and stay in County-funded behavioral health careers locally

Components

- Pay It Forward Loan 0% Loan Program, recycled loan payments
- Upskilling programs that provide training, apprenticeships, tuition support, and incentives

Planning & Implementation

- Information sessions underway
- Anticipated to begin Fall 2025
- Support to 2,800 people over five years



Partnerships with Local Academic Institutions



Recommendations



1. Receive today's update about enhancing behavioral health accessibility.
2. Authorize the Director, Department of Purchasing and Contracting, to issue a Request for Statement of Qualifications (RFSQ) for partial hospitalization and intensive outpatient services.
3. Authorize the Director, Department of Purchasing and Contracting, to issue a Request for Statement of Qualifications (RFSQ) for chemical dependency recovery hospital beds.
4. Adopt the revised Lanterman-Petris-Short (LPS) Designation Guidelines and Processes for Facilities within San Diego County.



Item #16: Receive Update On Enhancing Behavioral Health Accessibility; Authorize Multiple Requests For Statement Of Qualifications To Establish Contracts For Critical Services; And Adopt The Revised Lanterman-Petris-Short Designation Guidelines And Processes For Facilities Within San Diego County (Districts: All)

Kimberly Giardina, DSW, Deputy Chief Administrative Officer, Health and Human Services Agency
Nadia Privara, MPA, Acting Director, Behavioral Health Services
Luke Bergmann, PhD, Director, Behavioral Health Services

April 8, 2025