

**CLERK OF THE BOARD OF SUPERVISORS
EXHIBIT/DOCUMENT LOG**

MEETING DATE & AGENDA NO. 04/26/2022 #30

STAFF DOCUMENTS (Numerical)

No.	Presented by:	Description:
1	Staff	8 Page Document & 2 Maps
2		
3		
4		

PUBLIC DOCUMENTS (Alphabetical)

No.	Presented by:	Description:
A	N/A	
B		
C		
D		
E		
F		
G		

Environmental Review of the Roadside Vegetation Management for Evacuation Preparedness Program

Item #30

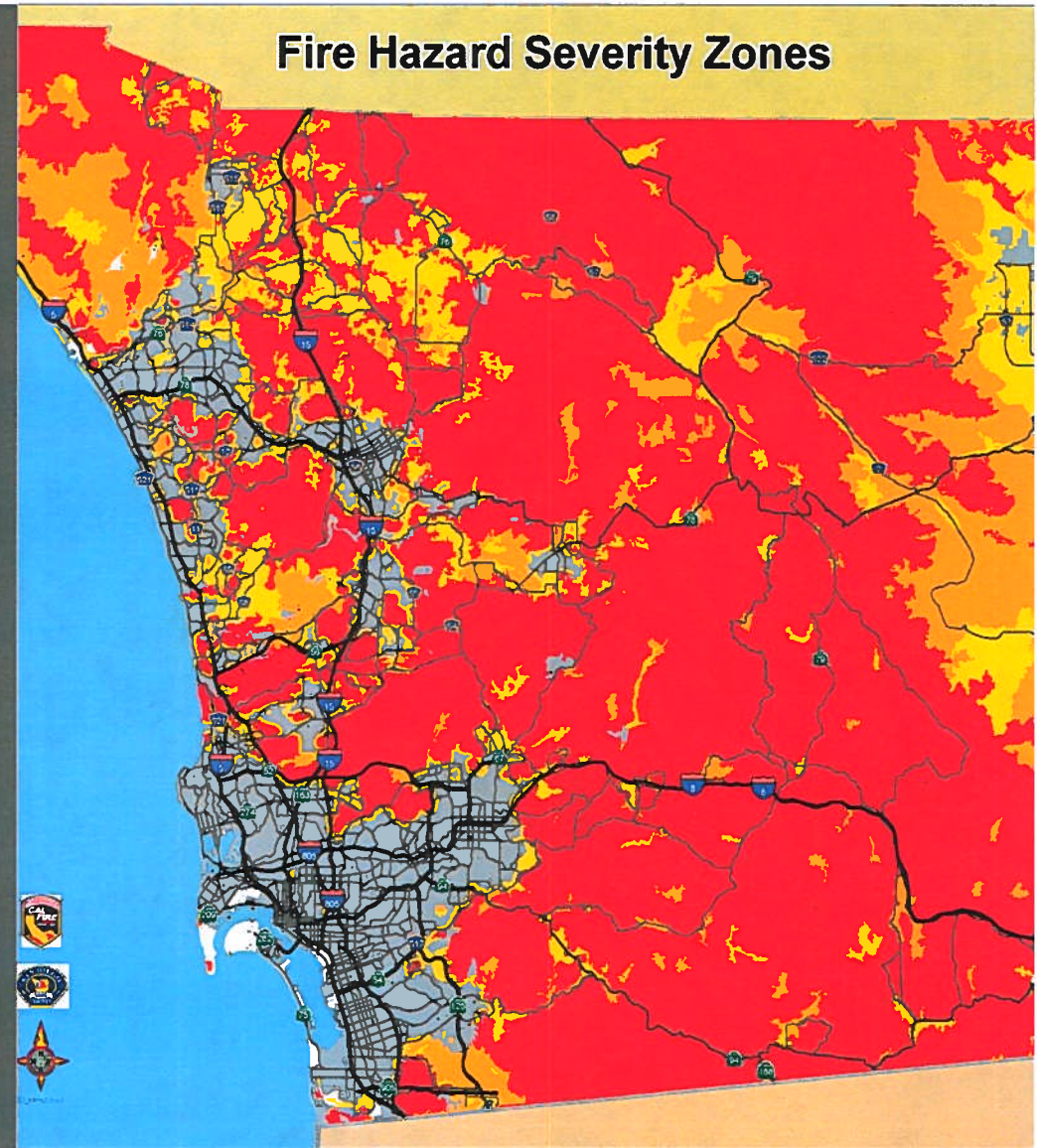
Holly Porter
Deputy CAO, Public Safety Group

Jason Malneritch
Deputy Chief, San Diego County Fire



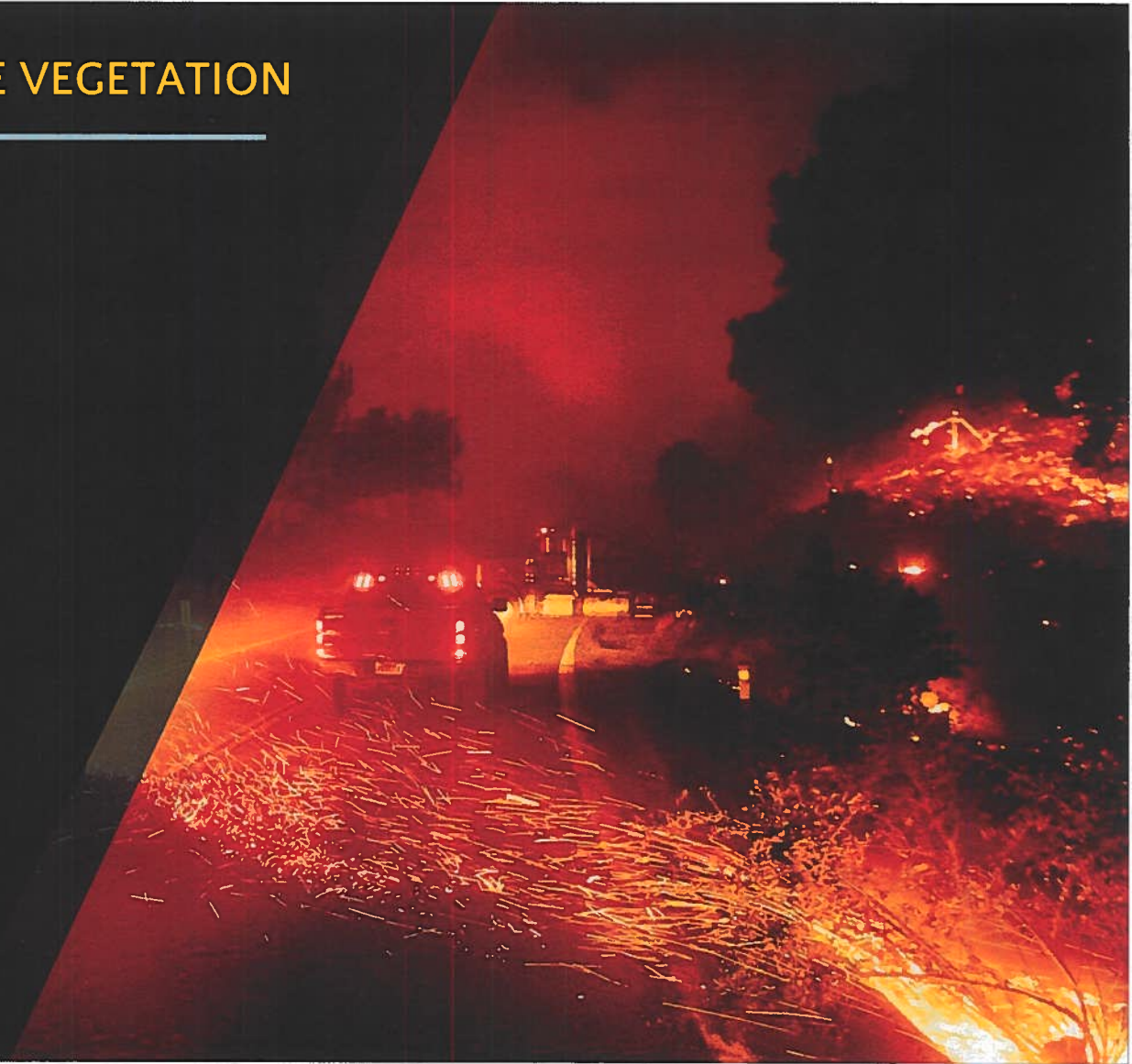
SAN DIEGO COUNTY WILDFIRE RISK

- 79% of the unincorporated San Diego County falls in a High or Very high Fire Hazard Severity Zone
- 41% of the unincorporated area has burned in a wildfire since 2000
- Residents have had to evacuate their homes in response to these incidents, for their safety
- Many wildfires start near the side of the road



A NEED TO MANAGE ROADSIDE VEGETATION

- Communities must always be ready to evacuate
- Fire personnel must always be ready to respond
- Many of the 2,000 miles of County roads serve as key corridors for evacuation and response
- Many of these roads run the risk of being overrun by fire due to vegetation
- Potential for life-threatening situations like entrapments

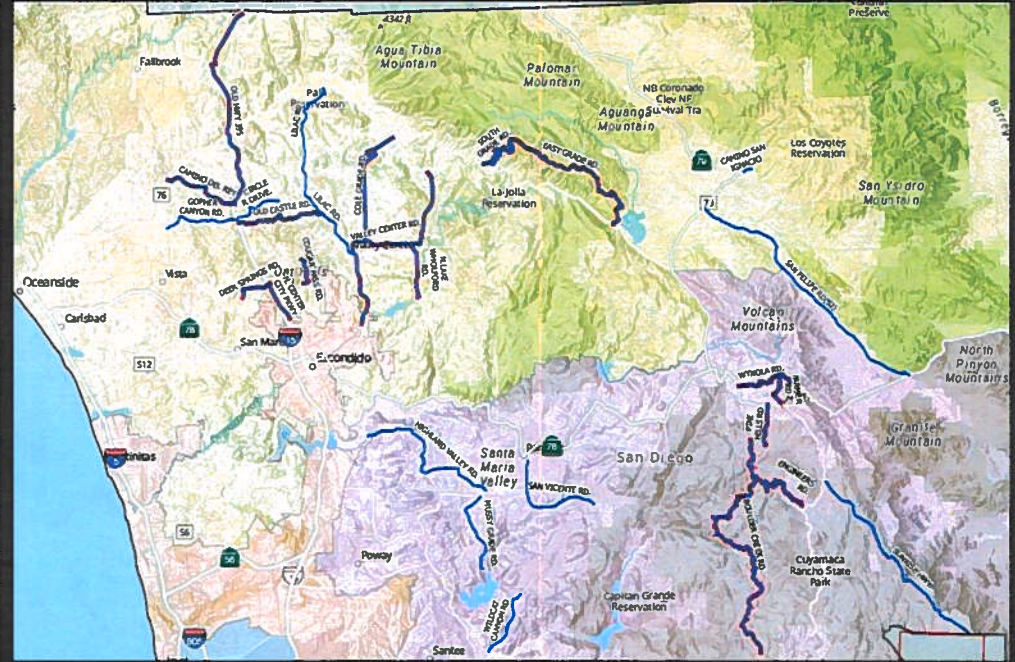


COUNTY FIRE & DPW MOW LIST

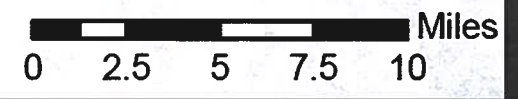
Southern Division



Northern Division

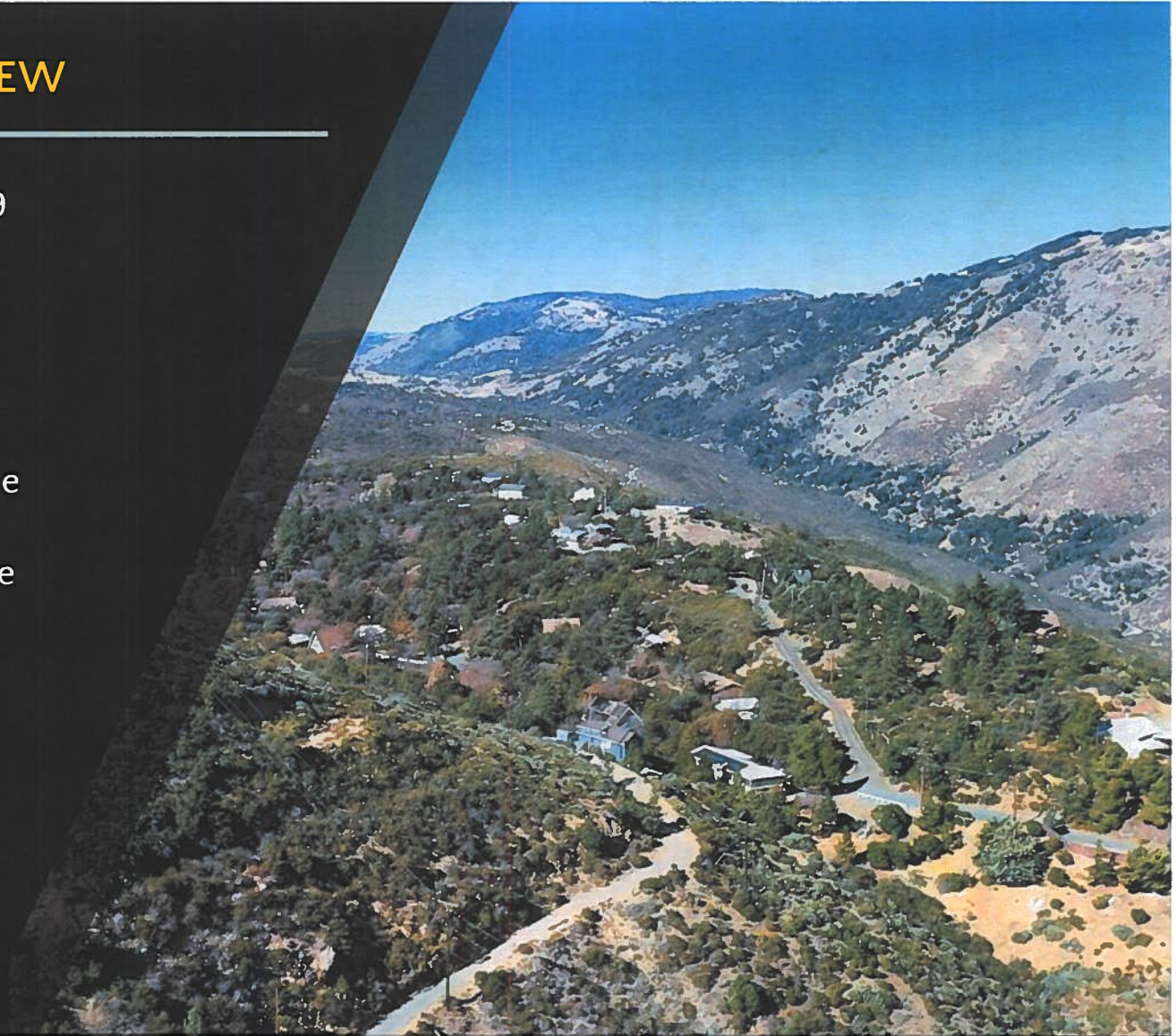


Legend	DPW Mow	Supervisor Districts	2ND SUPERVISORIAL DIST	4TH SUPERVISORIAL DIST
	County Fire		1ST SUPERVISORIAL DIST	3RD SUPERVISORIAL DIST



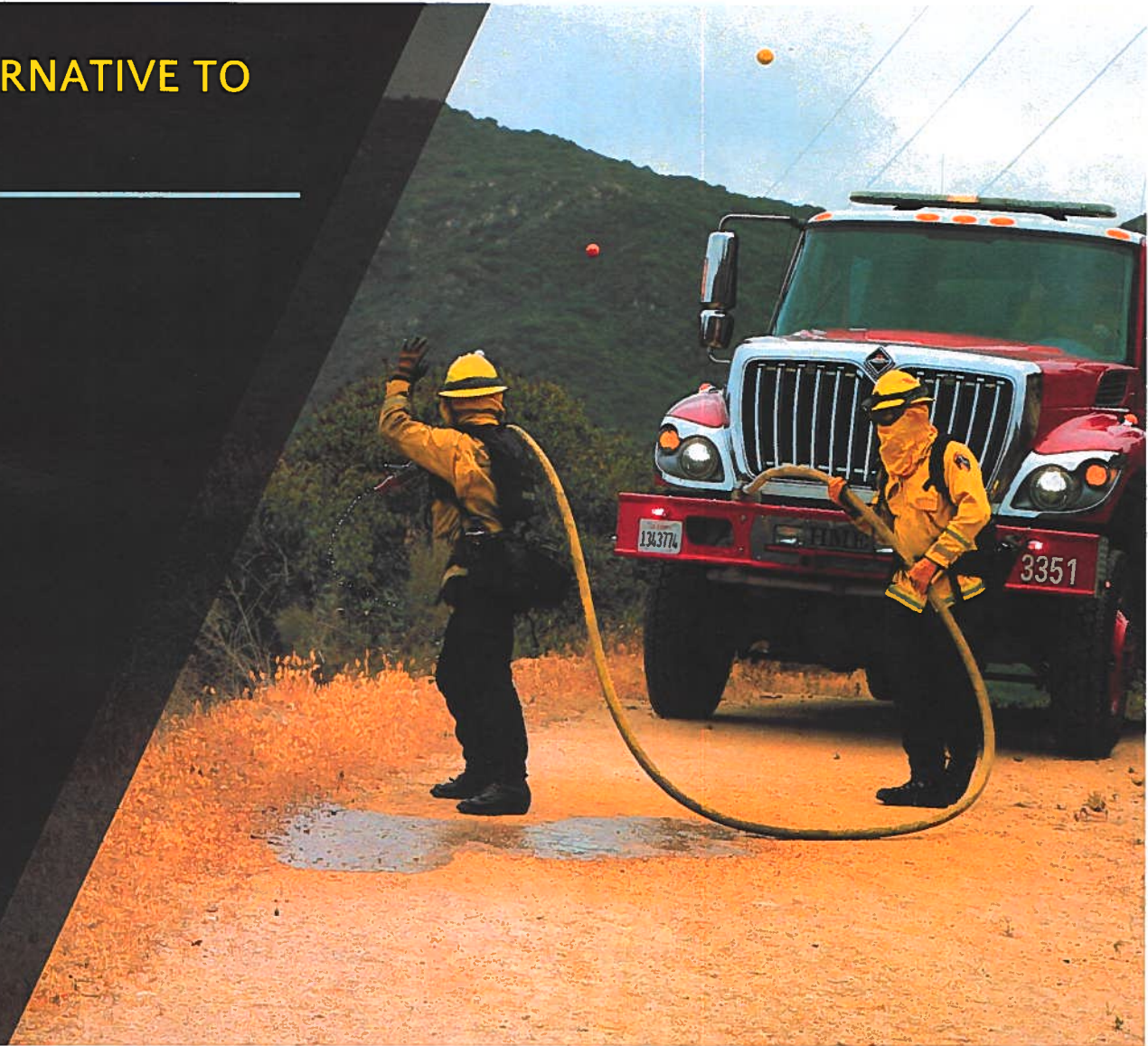
THE ENVIRONMENTAL REVIEW

- Complete biological survey of 29 road segments
- Reviewed 19 categories of environmental impact
- Identified 16 lane-miles within the project area that will be avoided due to sensitive plant and wildlife species
- Project Measures:
 - No ground disturbance & roots to remain intact
 - Avoid riparian areas
 - Avoid water crossings
 - Avoid environmentally sensitive areas



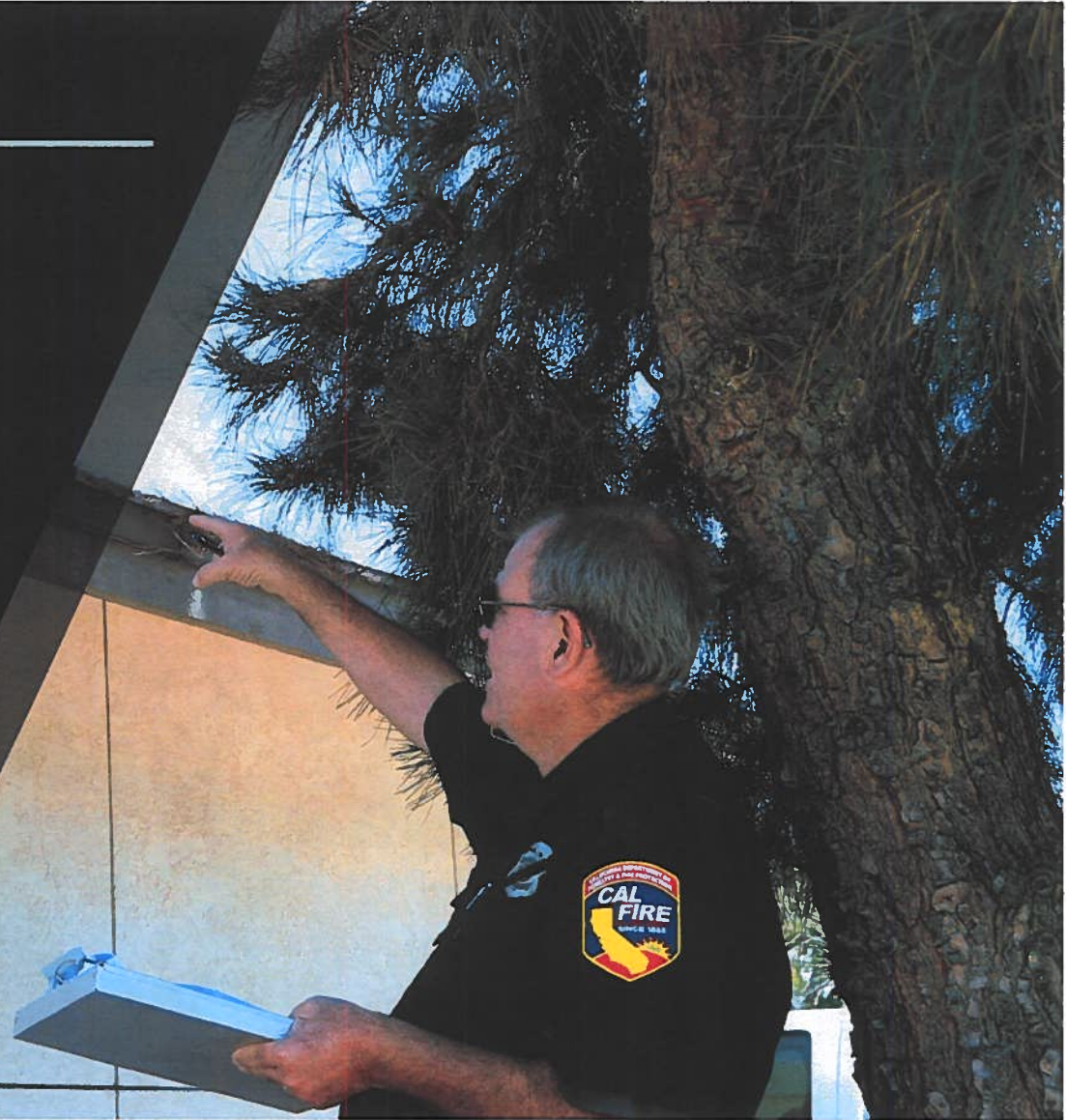
FIRE RETARDANT AS AN ALTERNATIVE TO VEGETATION MANAGEMENT

- Vegetation management may not be ideal in all areas
- County Fire has evaluated the use of long-term fire retardant (LTFR) as an alternative to vegetation trimming
- LTFR can provide retardant effectiveness even when exposed to up to two inches of cumulative rain
- Will not be applied to areas identified as sensitive habitat, riparian, or near a water crossing or on private property



THE COHESIVE PRE-FIRE STRATEGY

- Community Engagement
- Evacuation Planning
- Defensible Space
- Fuels Treatment
- Home Hardening

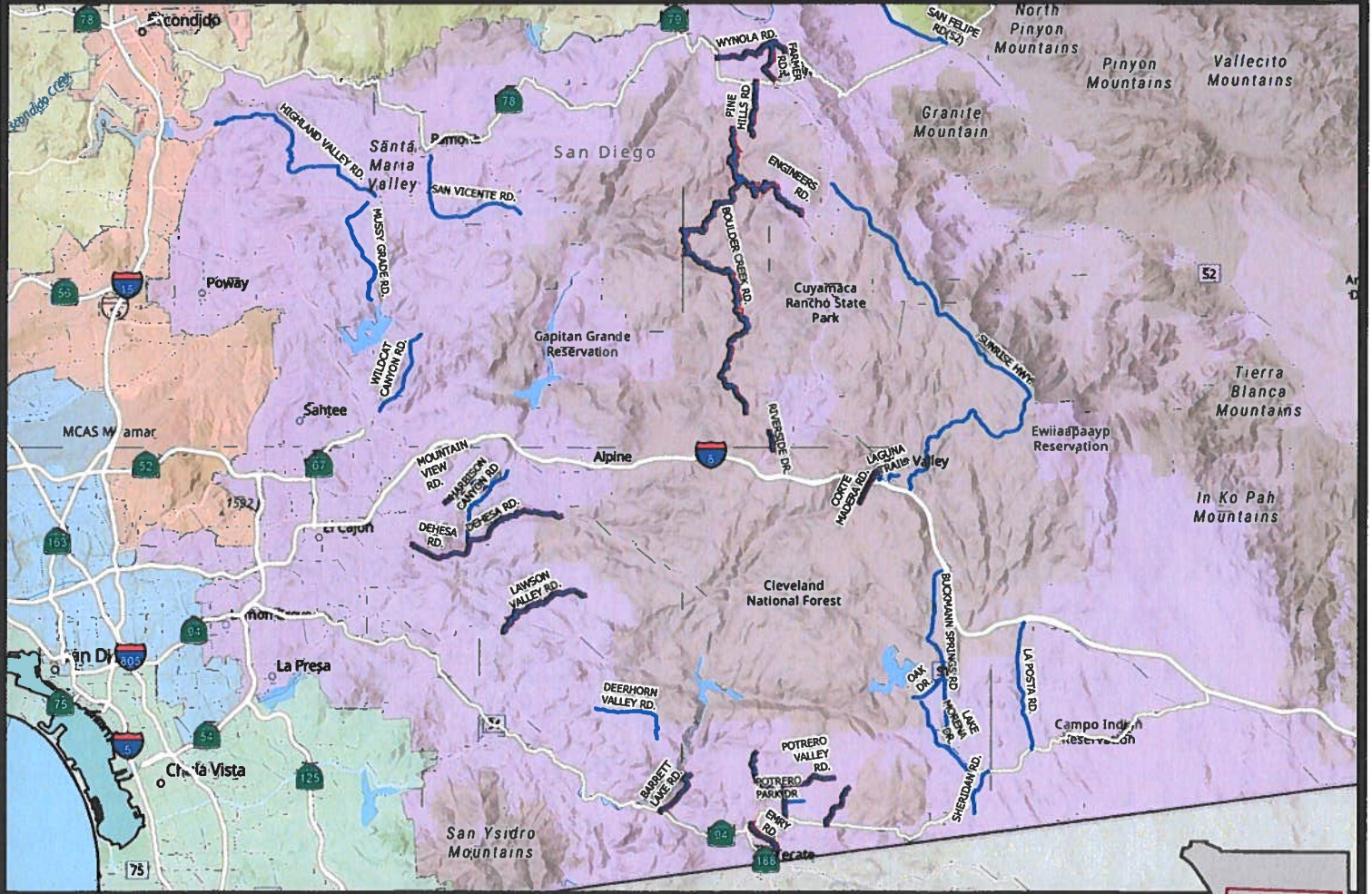


TODAY'S RECOMMENDATIONS

1. Find that the proposed actions are exempt from the California Environmental Quality Act (CEQA) pursuant to CEQA Guidelines Sections 15301 and 15304(i).
2. In accordance with Board Policy A-87, Competitive Procurement, approve and authorize the Director of Purchasing and Contracting to enter into negotiations with Perimeter Solutions LP, and subject to successful negotiations and determination of a fair and reasonable price, award a contract for PHOS-CHEK FORTIFY® brand fire retardant.
3. Authorize San Diego County Fire Protection District to implement the *Roadside Vegetation Management for Evacuation Preparedness Program*.



County Fire & DPW Mow List - South

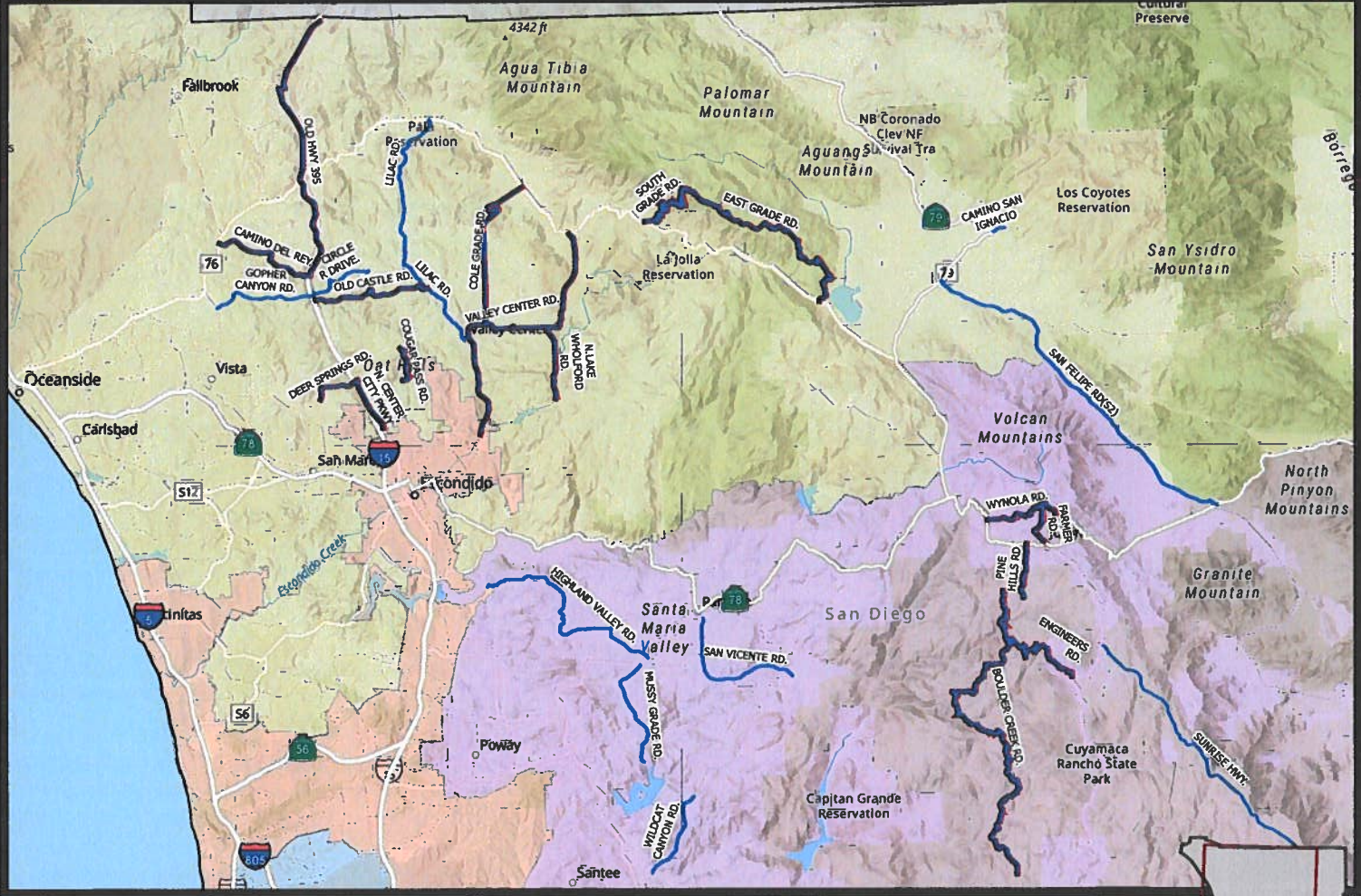


Legend

 DPW Mow	 1ST SUPERVISORIAL DIST	 2ND SUPERVISORIAL DIST	 4TH SUPERVISORIAL DIST
 County Fire	 1ST SUPERVISORIAL DIST	 3RD SUPERVISORIAL DIST	 5TH SUPERVISORIAL DIST



County Fire & DPW Mow List - North



Legend	
—	DPW Mow
—	County Fire
	Supervisor Districts
	1ST SUPERVISORIAL DIST
	2ND SUPERVISORIAL DIST
	3RD SUPERVISORIAL DIST
	4TH SUPERVISORIAL DIST
	5TH SUPERVISORIAL DIST

